

PART NUMBER

KWG177008

REV.

DATE

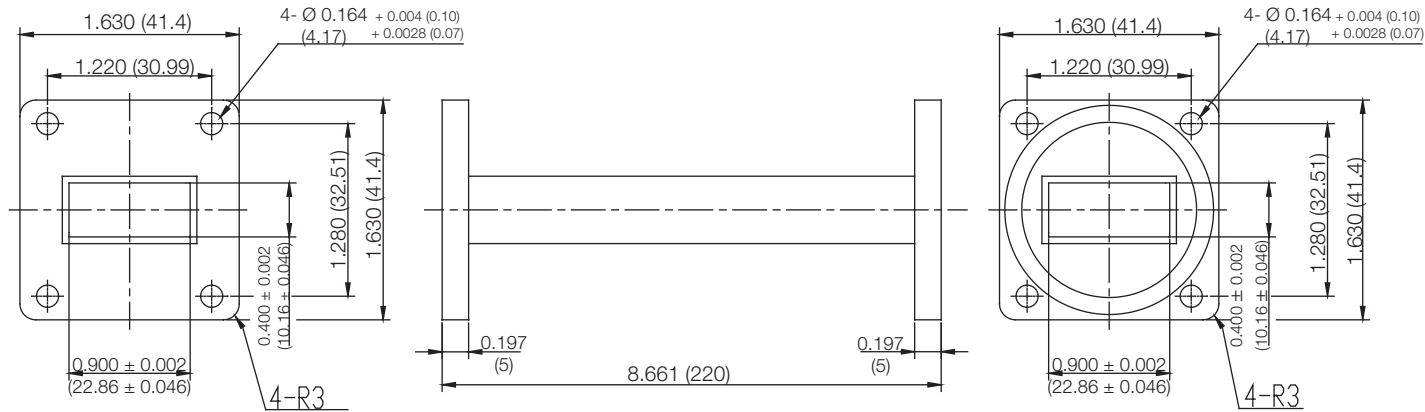
COMMENTS

INITIAL

RoHS Compliant

Electrical Data

| | |
|-------------------------------|------------------------------------|
| Impedance | 50 Ω |
| Frequency Range | 8.2 - 12.4 GHz. |
| Power Handling | 960W (CW) |
| Attenuator | 0.5 dB/m Max |
| VSWR | 1.20 Max |
| Flange Type | FBP 100 (Cover) / FBM100 (Grooved) |
| WaveGuide Type | WR90 |
| Maximum Twist | 308 deg/m |
| Minimum Bend Radius (E-Plane) | 66mm |
| Minimum Bend Radius (H-Plane) | 132mm |



Drawing not to scale. Dimensions for reference only

Units: inches (mm)

Konnect RF

WWW.KONNECTRF.COM
1-800-790-5887

PART NUMBER

KWG177008

DESCRIPTION

Waveguide, Flexible-Twistable, WR90

CAGE CODE

664U0

SIGNATURE

X

Component
Body

Material
Copper/Brass

Plating
Black Polysulfide Rubber

THIS DRAWING INCLUDING THE
DESIGNS IS THE PROPERTY OF
KONNECT RF AND IS NOT TO
BE USED FOR ANY PURPOSE
WITHOUT OUR APPROVAL.