

KIS177256

Isolator, Lumped Element, 869-894 MHz, Insertion Loss 0.65 dB, Isolation 15 dB, Forward Power 10W/ Reverse Power 2W, VSWR 1.5

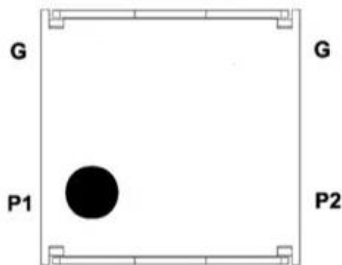
Production Classification

Model No	KIS177256
Product Type	Lumped Elements Isolator

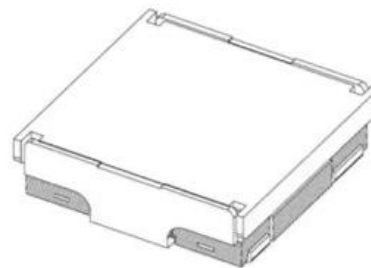
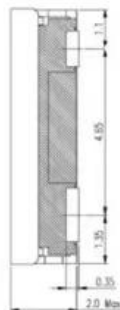
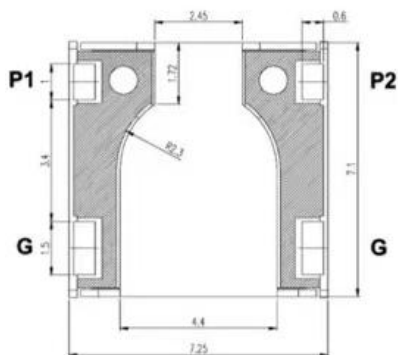
Electrical Specification

Frequency Range	896 ~ 894 MHz
Operating Temp.	-35 ~ +85 °C
Insertion Loss	0.65 dB max.
Isolation	15 dB min.
VSWR	1.5 max.
Forward Power	10 W max.
Reverse Power	2 W max.

Outline Drawing



P1,P2	: IN/OUT Port
G	: Ground
	: 881.5MHz[fc]
● P01	:
● P01	L type [signal flow direction P1 → P2]
P01 ●	R type [signal flow direction P2 → P1]
	[or left side dot is L type, right side dot is R type]



Scale : N/S
Unit : mm
Tolerance : ±0.2