

PART NUMBER

KCC198452

REV.

DATE

COMMENTS

INITIAL

Electrical Data

Impedance

100 Ω

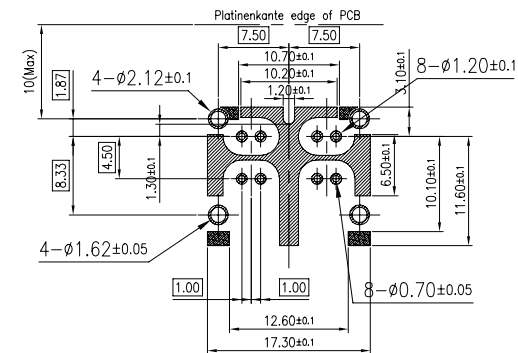
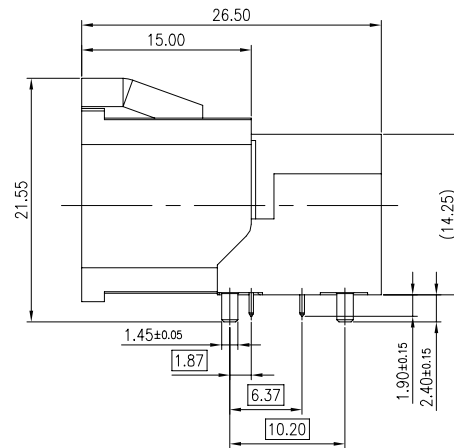
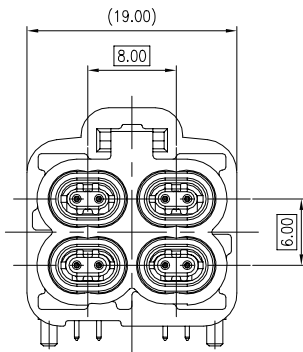
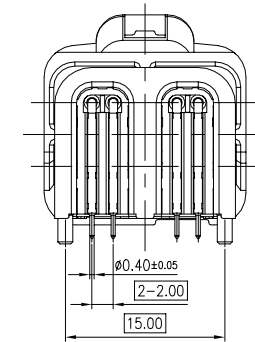
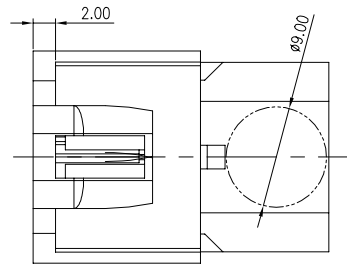
Frequency Range

DC - 10 GHz.

Return Loss

 ≥ 30 dB, 0.01GHz to 3 GHz ≥ 25 dB, 3 GHz to 6 GHz ≥ 20 dB, 6 GHz to 10 GHz

RoHS Compliant

RECOMMENDED PCB LAYOUT
GENERAL TOLERANCE ± 0.05

Drawing not to scale. Dimensions for reference only

Units: inches mm

Konnnect RFWWW.KONNECTRF.COM
1-800-790-5887

PART NUMBER

KCC198452

DESCRIPTION

H-AMTD PCB Plug, Right Angle Quad 5

CAGE CODE

664U0

SIGNATURE

X

THIS DRAWING INCLUDING THE
DESIGNS IS THE PROPERTY OF
KONNECT RF AND IS NOT TO
BE USED FOR ANY PURPOSE
WITHOUT OUR APPROVAL.**Component**Housing
Center Contact
Shell
Baffle
Insulator**Material**PA9T
Brass
Zamak3
C5191-H
LCP**Plating**

240u Matte Tin

**Underplating: 50-100u Nickel Overall