

PART NUMBER

KCC198410

REV.

DATE

COMMENTS

INITIAL

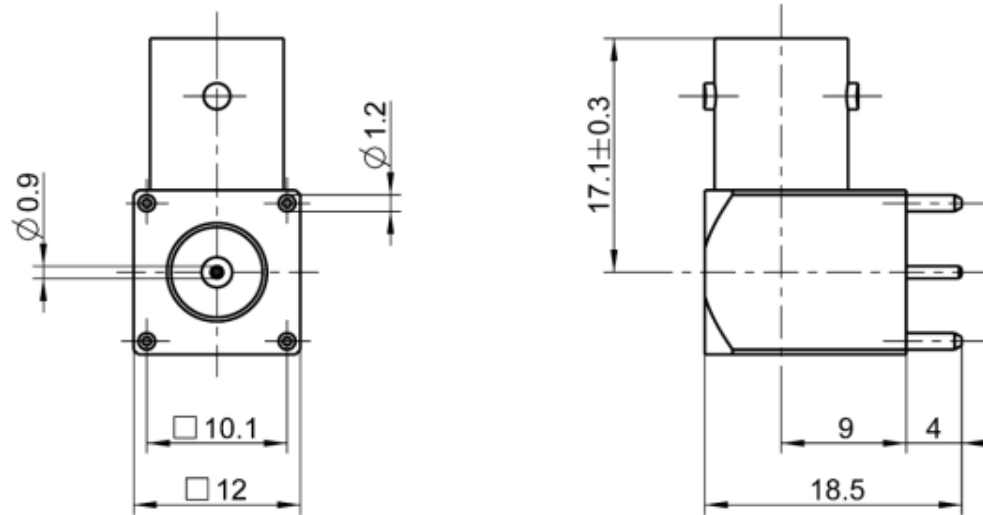
Electrical Data

Impedance	50 Ω
Frequency	DC ~ 4 GHz.
Insulation Resistance	\geq 5000 M Ω
Dielectric Withstanding Voltage	1000 V
VSWR	\leq 1.25:1

Mechanical Data

Durability	500 Cycles
Temperature Range:	-55 °C ~ +155 °C

RoHS Compliant



Drawing not to scale. Dimensions for reference only

Units: mm

Konnnect RF

WWW.KONNECTRF.COM
1-800-790-5887

PART NUMBER

KCC198410

DESCRIPTION

**BNC Right Angle Female Jack,
4 Leg PC Board Receptacle**

CAGE CODE

664U0

SIGNATURE

X

Component
Body
Center Contact
Dielectric

Material
Brass
BeCU
PTFE

Plating
White Bronze
Gold (without Nickel underplating)

THIS DRAWING INCLUDING THE
DESIGNS IS THE PROPERTY OF
KONNECT RF AND IS NOT TO
BE USED FOR ANY PURPOSE
WITHOUT OUR APPROVAL.