

PART NUMBER

**KCC198407**

REV.

DATE

COMMENTS

INITIAL

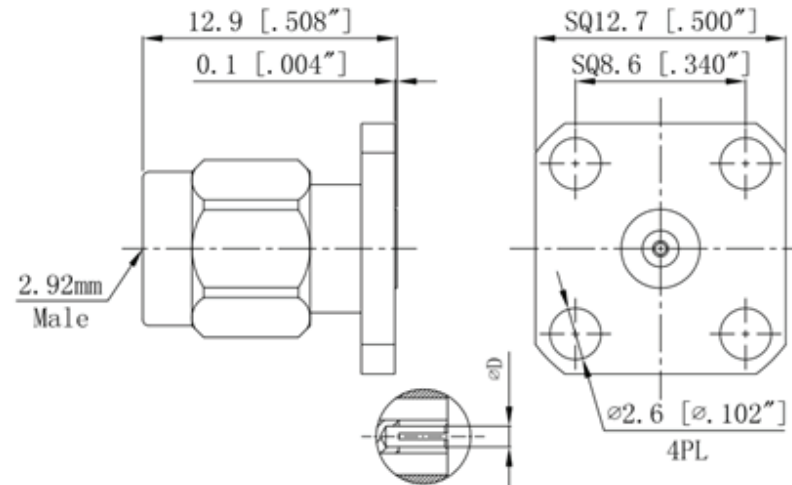
**Electrical Data**

Impedance	50 $\Omega$
Frequency Range	DC - 40 GHz.
Insulation Resistance	5000 M $\Omega$
Dielectric Withstanding Voltage	1000 VRMS
VSWR	1.25:1

**Mechanical Data**

Durability	500 Cycles Min.
Temperature Range:	-55 °C - 165 °C

RoHS Compliant



Drawing not to scale. Dimensions for reference only

Units: mm (inches)

**Konnect RF**

WWW.KONNECTRF.COM  
1-800-790-5887

PART NUMBER

**KCC198407**

DESCRIPTION

**2.9mm Straight Male Plug Field Replaceable Receptacle, 4 Hole Flange Mount**

CAGE CODE

**664U0**

SIGNATURE

X

**Component**

Body  
Center Contact  
Nut  
Dielectric

**Material**

Stainless Steel  
BeCu  
Stainless Steel  
PEI

**Plating**

Passivated  
Gold  
Passivated

THIS DRAWING INCLUDING THE DESIGNS IS THE PROPERTY OF KONNECT RF AND IS NOT TO BE USED FOR ANY PURPOSE WITHOUT OUR APPROVAL.