

PART NUMBER

KCC198218

REV.

DATE

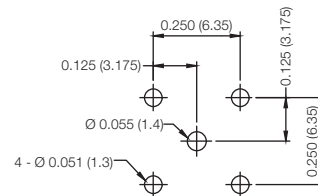
COMMENTS

INITIAL

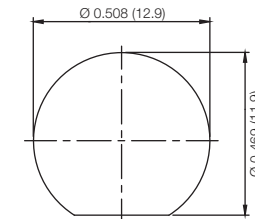
Electrical DataImpedance 75 Ω **Environmental Data**

IP67

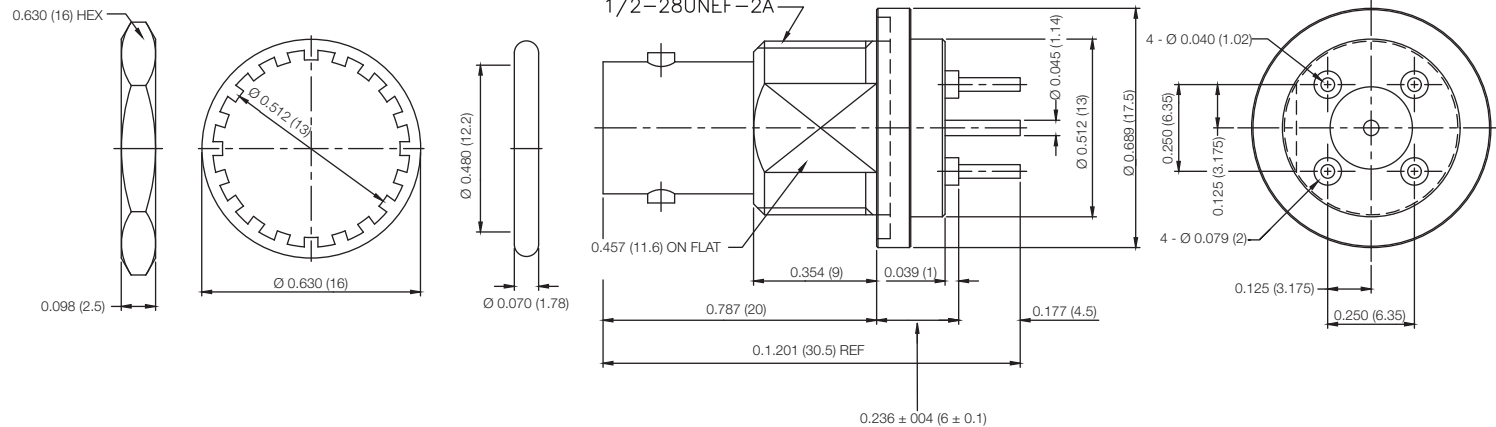
RoHS Compliant



PCB MOUNTING HOLE



RECOMMENDED MOUNTING HOLE



Drawing not to scale. Dimensions for reference only

Units: inches (mm)

Konnect RF

WWW.KONNECTRF.COM
1-800-790-5887

PART NUMBER

KCC198218

DESCRIPTION

BNC Straight Female Jack, PC Board Receptacle, Bulkhead Mount,

CAGE CODE

664U0

SIGNATURE

X

THIS DRAWING INCLUDING THE DESIGNS IS THE PROPERTY OF KONNECT RF AND IS NOT TO BE USED FOR ANY PURPOSE WITHOUT OUR APPROVAL.

Component

Body, Hex Nut, Lock Washer

Material

Brass

Plating

Nickel PL. 100 Min. Thick Over

Copper PL. 50 Min. Thick

Contact Pin

Phosphor Bronze

Gold PL. 3 Min. Thick Over Nickel PL.

50 Min. Thick over Copper PL.

50 Min Thick

Insulator
Lock RingPTFE
Iron

Nickel PL. 100 Min. Thick Over

Copper PL. 50 Min. Thick

Leg

Brass

Bright Tin PL. 200 Min. Thick Over

Copper PL. 50 Min. Thick

Gasket
GasketSilicon
SiliconRed
Black