

PART NUMBER

**KWG177947**

REV.

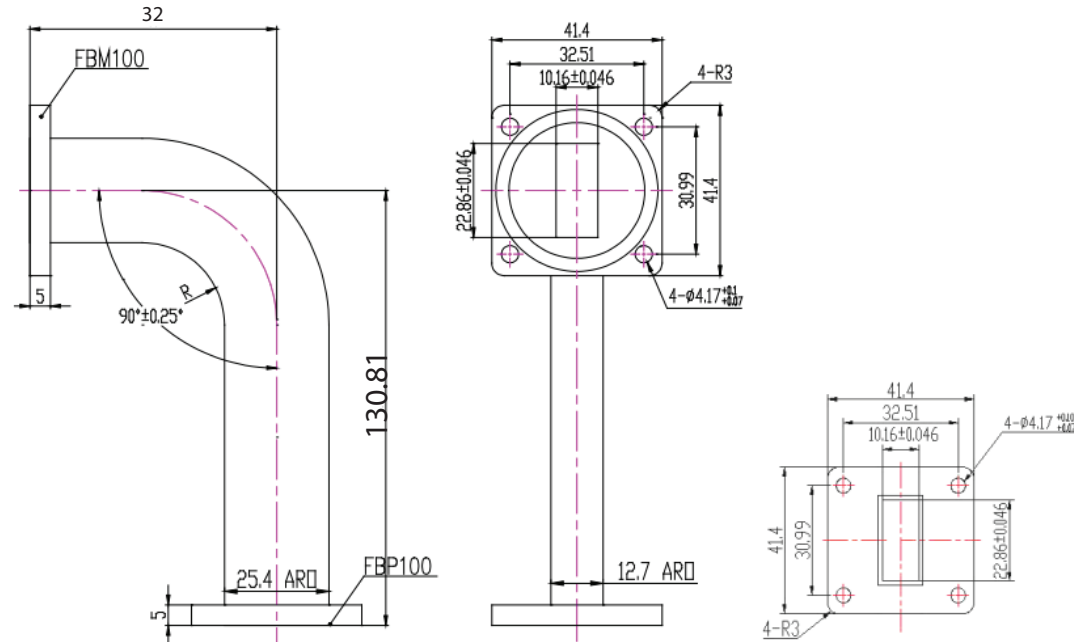
DATE

COMMENTS

INITIAL

**Electrical Data**

Impedance	50 $\Omega$
Frequency Range	8.2~12.4GHz
Bandwidth	10~15%
Waveguide	WR90
VSWR	1.10 max.
Flange	FBP100( Cover)/FBM100(Grooved)
Insertion Loss	0.2dB

**RoHS Compliant**

Drawing not to scale. Dimensions for reference only

Units: mm

**Konnect RF**

WWW.KONNECTRF.COM  
1-800-790-5887

PART NUMBER

**KWG177947**

DESCRIPTION

**Waveguide H-Bend,WR90, 8.2-12.4GHz**

CAGE CODE

**664U0**

SIGNATURE

X

**Component**

Body  
Material  
Accessory

**Material**

Silver  
Brass

**Plating**

Corrosion Protected Grey paint  
Copper

1pc rubber gasket for FBM100

THIS DRAWING INCLUDING THE  
DESIGNS IS THE PROPERTY OF  
KONNECT RF AND IS NOT TO  
BE USED FOR ANY PURPOSE  
WITHOUT OUR APPROVAL.