

PART NUMBER

KWG177812

REV.

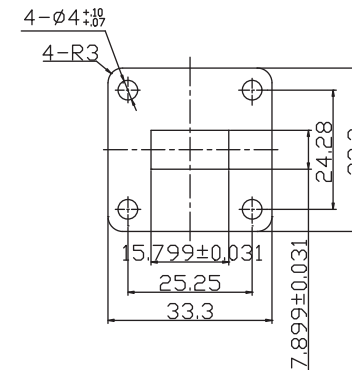
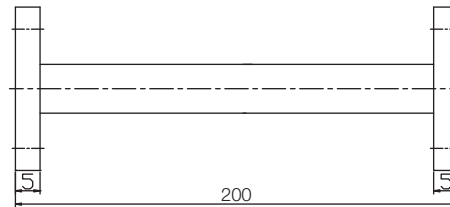
DATE

COMMENTS

INITIAL

Electrical Data

Frequency Range 11.9 - 18 GHz.
VSWR 1.05

RoHS Compliant

Drawing not to scale. Dimensions for reference only

Units: mm

Konnect RF

WWW.KONNECTRF.COM
1-800-790-5887

PART NUMBER

KWG177812

DESCRIPTION

Waveguide, WR62

CAGE CODE

664U0

SIGNATURE

X

Component
Body

Material
Copper

Plating
Silver (Inside)
Anticorrosion Black Paint (Outside)

THIS DRAWING INCLUDING THE
DESIGNS IS THE PROPERTY OF
KONNECT RF AND IS NOT TO
BE USED FOR ANY PURPOSE
WITHOUT OUR APPROVAL.