

PART NUMBER

KWG177204

REV.

A

DATE

4/12/12

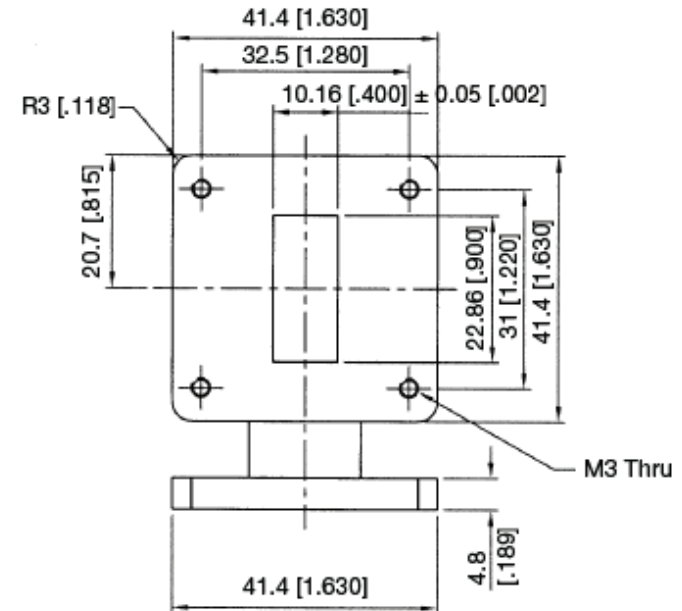
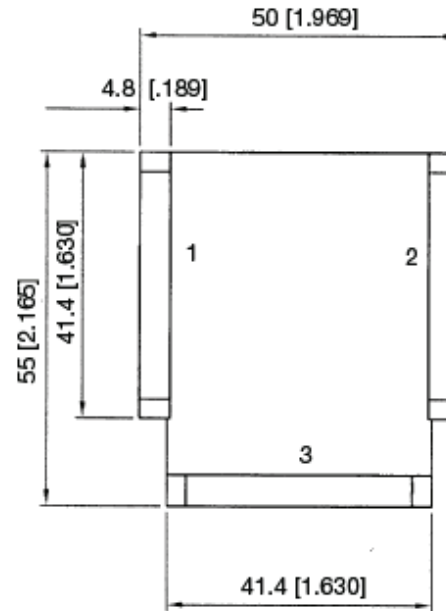
DESC.

Increase Power Handling

INITIAL

Electrical Data

Frequency Range	9.10 - 9.50 GHz
Isolation	20 dB Min.
Insertion Loss	0.30 dB Max.
VSWR	1.20 Max.
Average Power	150 Watt
Peak Power	600 W
Operating Temperature	-10°C to + 55°C

RoHS Compliant

VSWR and Frequency Range Specifications are for reference and are dependant on cable type and other application specific conditions

Drawing not to scale. Dimensions for reference only

Konnect RF

540 NW University Blvd. Ste. 109
Port Saint Lucie, Florida, 34986
1-800-790-5887

PART NUMBER

KWG177204

DESCRIPTION

Waveguide Circulator - WR90

CAGE CODE

664U0

SIGNATURE

X

Materials

Body

Aluminium

Yellow Chromate

THIS DRAWING INCLUDING THE DESIGNS IS THE PROPERTY OF KONNECT RF AND IS NOT TO BE USED FOR ANY PURPOSE WITHOUT OUR APPROVAL.