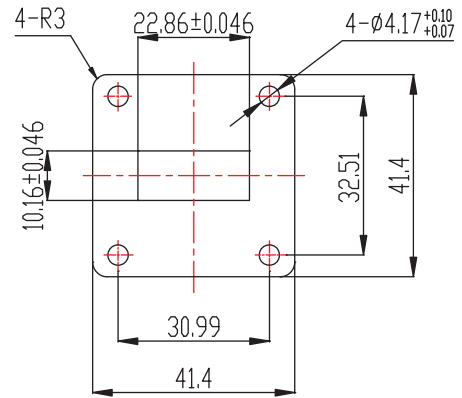
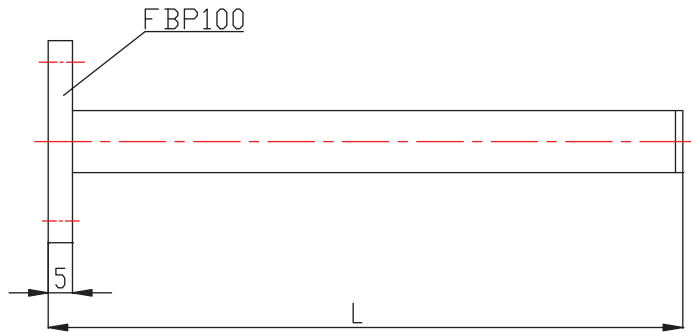


Waveguide Termination



1.0	Mechanical Specifications	
1.1	Waveguide type	WR90
1.2	Flange type	FBP100 (Cover)
1.3	Material	Aluminum
1.4	Inside finish	Chromate conversion
1.5	Outside finish	Corrosion protected with black paint
1.6	Length	L=130 mm
1.7	Temperature range	-40°C ~ +70°C
2.0	Electrical Specifications	
2.1	Frequency Range	8.2-12.5 GHz
2.2	VSWR (Max)	1.20:1
2.3	Power Handling	15W(Avg)/110KW(Peak)
3.0	Outline Drawings	