

PART NUMBER

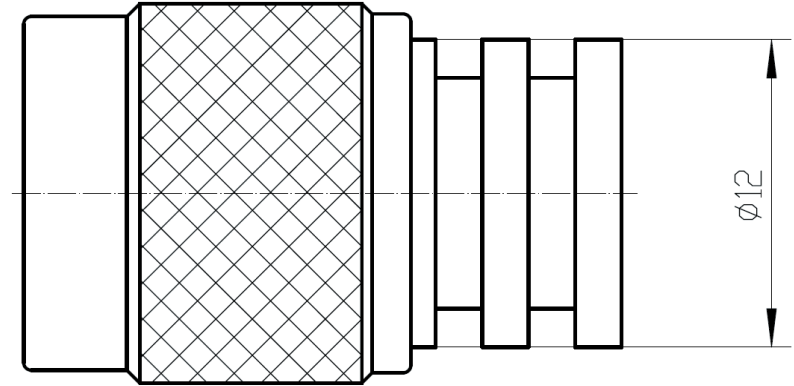
KTM177230

REV.

INITIAL

Electrical Data

Impedance 50 Ω
 Frequency Range DC - 18 GHz
 VSWR 1.50 Max.
 Insulation Resistance 5000 M Ω
 Handling Power 2W

RoHS Compliant

VSWR and Frequency Range Specifications
 are for reference and are dependant on cable
 type and other application specific conditions

Drawing not to scale. Dimensions for reference only

Units: mm

WWW.KONNECTRF.COM
 1-800-790-5887

PART NUMBER

KTM177230DESCRIPTION **Termination, TNC Male Plug**

CAGE CODE

664U0

SIGNATURE

X

THIS DRAWING INCLUDING THE
 DESIGNS IS THE PROPERTY OF
 KONNECT RF AND IS NOT TO
 BE USED FOR ANY PURPOSE
 WITHOUT OUR APPROVAL.

Component

Body
 Center Contact
 Insulator

Material

Brass
 Phos.Bronze
 PTFE

Plating

Nickel
 Gold