

PART NUMBER

**KTM177100**

REV.

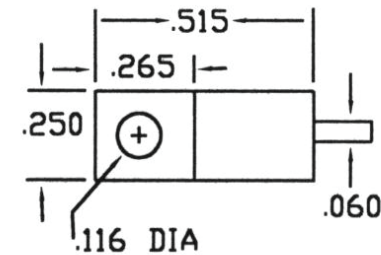
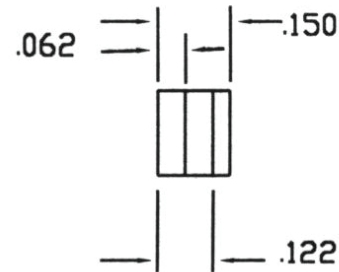
DATE

COMMENTS

INITIAL

**Electrical Data**

Resistance 50  $\Omega$   
 Frequency Range DC - 2 GHz.  
 Power Handling 40 Watts @ 100°C  
 0 Watts @ 250°C  
 VSWR  $\leq 1.10$  @ DC-1 GHz  
 $\leq 1.25$  @ 1-2 GHz  
 Tolerance  $\pm 5\%$   
 Mechanical Tolerance  $\pm 10''$

**RoHS Compliant**

Drawing not to scale. Dimensions for reference only

Units: inches

**Konnect RF**

WWW.KONNECTRF.COM  
 1-800-790-5887

PART NUMBER

**KTM177100**

DESCRIPTION

**Termination, High Power Brazed**

CAGE CODE

**664U0**

SIGNATURE

X

THIS DRAWING INCLUDING THE  
 DESIGNS IS THE PROPERTY OF  
 KONNECT RF AND IS NOT TO  
 BE USED FOR ANY PURPOSE  
 WITHOUT OUR APPROVAL.

**Component**

Substrate  
 Flange  
 Tab  
 Cover  
 Resistive

**Material**

BeO  
 Copper  
 Nickel  
 Alumina  
 NiChrome

**Plating**

Nickel  
 Silver