

PART NUMBER

**KTM177067**

REV.

DATE

COMMENTS

INITIAL

**RoHS Compliant**

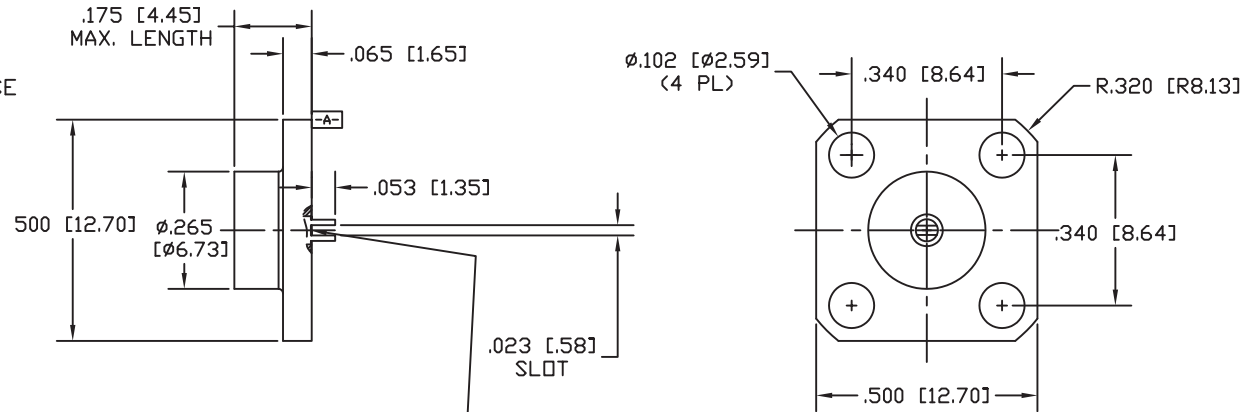
SPECIFICATIONS: - DESIGNED TO MEET ENVIRONMENTALS IAW MIL-DTL-3933

>POWER 10 WATT AVG./RMS FROM -55°C TO +60°C CASE TEMP - DERATES TO 10% @ 150°C

>PEAK POWER MAX 100 WATTS, 100µSec PW, 0.1% DUTY CYCLE OR 500 WATTS, 10µSec PW, 0.1% DC

VSWR (MAX.)

DC-4 GHz	1.10
4- 12 GHz	1.25
12-18 GHz	1.40



BOTTOM OF SLOT SHALL BE BELOW THE FLANGE FACE -A-  
>SOLDER RESIDUE (ROHS) MAY BE VISIBLE IN SLOT, BOTTOM DOES NOT AFFECT ATTACHMENT TO CIRCUIT TERMINALS

>HOUSING IS ROHS BRASS, WHITE BRONZE PLATED

>CONTACT IS ROHS BRASS OR BECU, GOLD PLATED  
>DIELECTRIC IS TEFLON/AIR COMPOSITE - EPOXY CAPTIVATED

>RESISTOR IS PROTECTED PROPRIETARY THIN FILM  
VALUE: 50Ω ±5%

MATERIALS AND PLATINGS SELECTED TO REDUCE 3rd ORDER INTERMODULATION CONTRIBUTED BY THIS TERMINATION TO TYPICALLY BETTER THAN 120 dBc TO 150 dBc POSSIBLE

Drawing not to scale. Dimensions for reference only

Units: inches (mm)

# Konnect RF

WWW.KONNECTRF.COM  
1-800-790-5887

PART NUMBER

**KTM177067**

DESCRIPTION

**Termination, Stripline**

CAGE CODE

**664U0**

SIGNATURE

X

THIS DRAWING INCLUDING THE DESIGNS IS THE PROPERTY OF KONNECT RF AND IS NOT TO BE USED FOR ANY PURPOSE WITHOUT OUR APPROVAL.