

PART NUMBER

**KTM177065**

REV.

DATE

COMMENTS

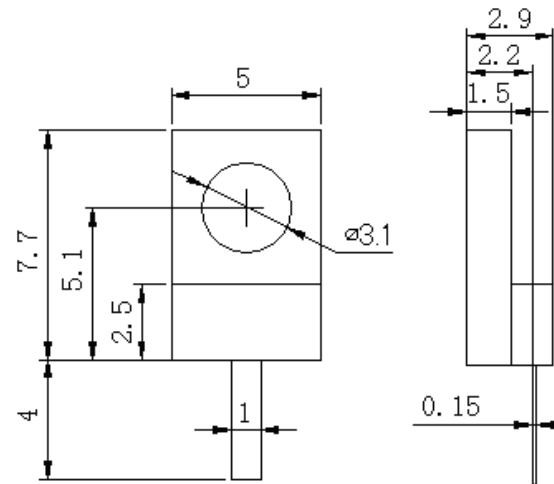
INITIAL

**Electrical Data**

Impedance 50  $\Omega$   
 Frequency Range DC - 18 GHz.  
 Resistance Tolerance  $\pm 5\%$   
 Power Rating 20 Watts  
 VSWR  $\leq 1.35$

**RoHS Compliant****Mechanical Data**

Temperature Range: -55  $^{\circ}\text{C}$  - 150  $^{\circ}\text{C}$   
 Temperature Coefficient < 150 ppm/ $^{\circ}\text{C}$  max.



Drawing not to scale. Dimensions for reference only

Units: mm

**Konnnect RF**

WWW.KONNECTRF.COM  
 1-800-790-5887

PART NUMBER

**KTM177065**

DESCRIPTION

**Termination, Drop In, Flange Mount**

CAGE CODE

**664U0**

SIGNATURE

X

THIS DRAWING INCLUDING THE  
 DESIGNS IS THE PROPERTY OF  
 KONNECT RF AND IS NOT TO  
 BE USED FOR ANY PURPOSE  
 WITHOUT OUR APPROVAL.