

PART NUMBER

KTM177059

REV.

DATE

COMMENTS

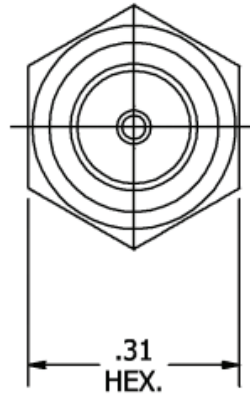
INITIAL

Electrical Data

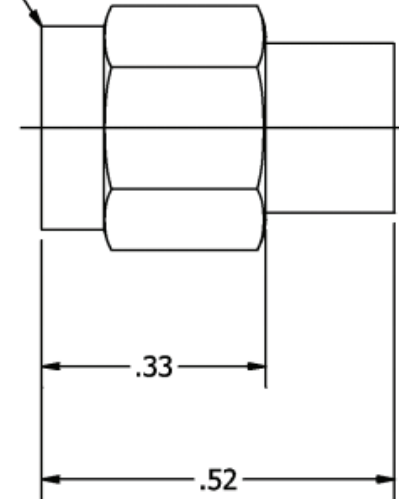
Impedance 50 Ω
 VSWR 1.10:1 maximum DC-8 GHz
 1.15:1 maximum 8-12.4 GHz
 1.20:1 maximum 12.4-18 GHz
 RF Input Power 1 Watt average @ 25°C
 (derate linearly to 0 Watts @ +
 Peak Power 1000 Watts (5 microseconds, 0.05% duty cycle)

RoHS Compliant**Mechanical Data**

Temperature Range: -55 °C - 125 °C



SMA MALE



Designed to operate in a TVAC lab
 environment but not tested

Drawing not to scale. Dimensions for reference only**Units: inches****Konnect RF**

WWW.KONNECTRF.COM
 1-800-790-5887

PART NUMBER

KTM177059

DESCRIPTION

TVAC Termination, SMA Male Plug

CAGE CODE

664U0

SIGNATURE

X

THIS DRAWING INCLUDING THE
 DESIGNS IS THE PROPERTY OF
 KONNECT RF AND IS NOT TO
 BE USED FOR ANY PURPOSE
 WITHOUT OUR APPROVAL.

Component

Body & Coupling Nut
 Male Contact

Material

Stainless Steel
 Brass

Plating

Gold
 Gold