

PART NUMBER

**KTM177020**

REV.

DATE

COMMENTS

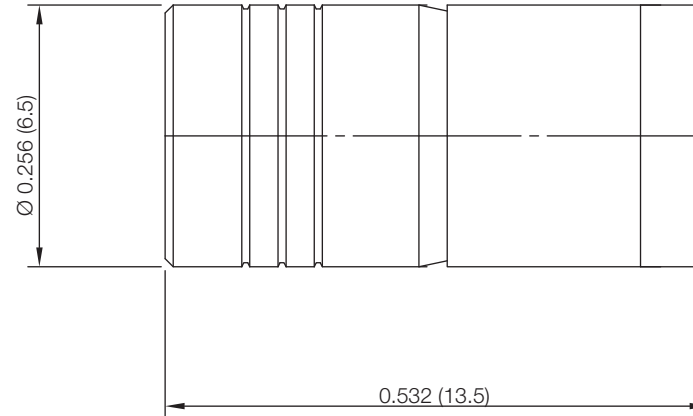
INITIAL

**Electrical Data**

Impedance 50  $\Omega$   
 Frequency Range DC - 4 GHz.  
 Power Rating 1 Watt  
 VSWR  $\leq 1.20$  Max

**Mechanical Data**

Temperature Range: -55  $^{\circ}\text{C}$  - 125  $^{\circ}\text{C}$

**RoHS Compliant**

Drawing not to scale. Dimensions for reference only

Units: inches (mm)

**Konnect RF**

WWW.KONNECTRF.COM  
 1-800-790-5887

PART NUMBER

**KTM177020**

DESCRIPTION

**Termination, SMB Female Plug**

CAGE CODE

**664U0**

SIGNATURE

X

THIS DRAWING INCLUDING THE  
 DESIGNS IS THE PROPERTY OF  
 KONNECT RF AND IS NOT TO  
 BE USED FOR ANY PURPOSE  
 WITHOUT OUR APPROVAL.

**Component**

Body  
 Conductors

**Material**

Brass  
 BeCu

**Plating**

Gold  
 Gold