

PART NUMBER

KTM177008

REV.

DATE

COMMENTS

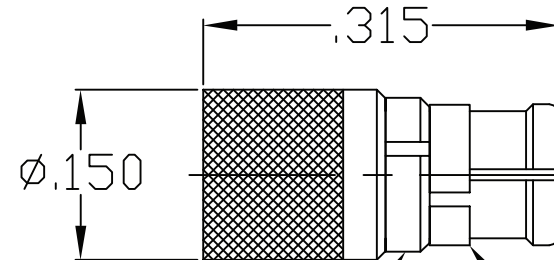
INITIAL

Electrical Data

Impedance 50 Ω +/- 1.0 Ω
 Frequency Range DC - 26.5 GHz
 Power Handling 0.5 Watt Avg @ 25 °C Derating
 Linearly to 0 Watt @ 125 °C
 VSWR 1.30

Mechanical Data

Temperature Range: -65 °C - 125 °C

RoHS Compliant

ANTI-ROCK RING EMI RING

Drawing not to scale. Dimensions for reference only

Units: inches

WWW.KONNECTRF.COM
 1-800-790-5887

PART NUMBER

KTM177008

DESCRIPTION

Termination, SMP Female Jack

CAGE CODE

664U0

SIGNATURE

X

THIS DRAWING INCLUDING THE
 DESIGNS IS THE PROPERTY OF
 KONNECT RF AND IS NOT TO
 BE USED FOR ANY PURPOSE
 WITHOUT OUR APPROVAL.

Component

Body
 Center Contact
 EMI Ring
 Anti-Rock Ring
 Insulator

Material

BeCu
 BeCu
 BeCu
 BeCu
 PTFE

Plating

Gold over Nickel
 Gold over Nickel
 Gold over Nickel
 Gold over Nickel