

PART NUMBER

KSW177502

REV.

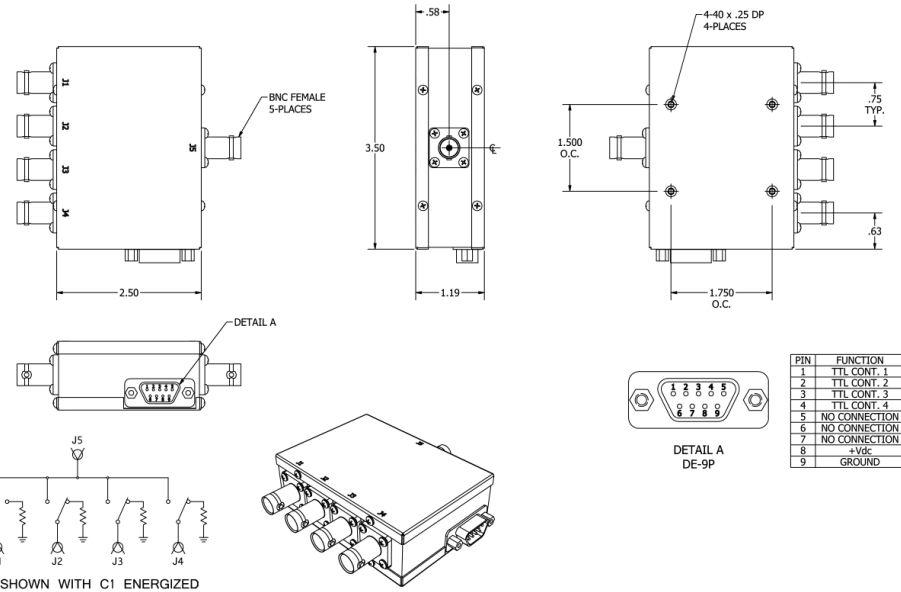
DATE

COMMENTS

INITIAL

Electrical Data

Impedance	75 Ω nominal
Frequency Range	DC - 2150 MHz.
Configuration	1P4T Normally Open Self Terminating
Insertion Loss	0.3 dB Typical @ 1,000 MHz
	0.5 dB Typical @ 2,150 MHz
	0.8 Maximum DC-2,150 MHz
Isolation	90 dB Typical DC- 500
	70 dB Minimum DC-500 MHz
	60 dB Typical 500-2,150 MHz
Switching Speed	50 dB Minimum 500-2,150
	10 Milliseconds Maximum
RF Input Power	+20 dBm
	TTL "High" (2.0-5.0V) on control line corresponding to desired port. TTL "low" (0-0.8V) on other three lines
VSWR	1.2:1 Maximum Dc-500 MHz
	1.4:1 Maximum 500-2,150 MHz
DC Supply	+XX can be +5Vdc, +12Vdc or +24Vdc
	+5 Vdc @ 120 mA Typical
	+12 Vdc @ 50 mA Typical
DC Connector	+ 24 Vdc @ 25 mA Typical
	DE-9p

RoHS Compliant

Drawing not to scale. Dimensions for reference only

Units: inches

Konnect RF

WWW.KONNECTRF.COM
1-800-790-5887

PART NUMBER

KSW177502

DESCRIPTION

Switch, 1P4T Normally Open Self Terminating

CAGE CODE

664U0

SIGNATURE

X

THIS DRAWING INCLUDING THE
DESIGNS IS THE PROPERTY OF
KONNECT RF AND IS NOT TO
BE USED FOR ANY PURPOSE
WITHOUT OUR APPROVAL.