

PART NUMBER

KPD177328

REV.

DATE

COMMENTS

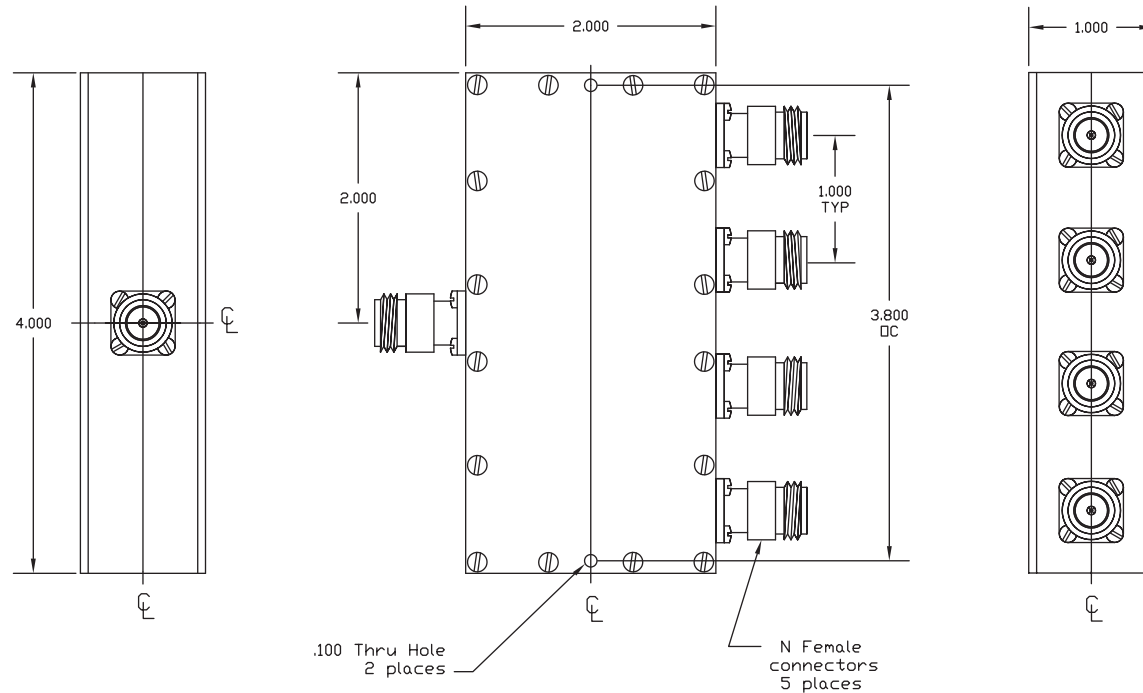
INITIAL

Electrical Data

Impedance 50 Ω
 Frequency Range DC - 3 GHz.
 Insertion Loss (Above Theoretical Loss) ± 0.75 dB Max.
 Input Power 1 Watt Average
 VSWR $\leq 1.40:1$ Max.

Mechanical Data

Temperature Range: -20 $^{\circ}$ C - 85 $^{\circ}$ C

RoHS Compliant

Drawing not to scale. Dimensions for reference only

Units: inches

Konnect RF

WWW.KONNECTRF.COM
 1-800-790-5887

PART NUMBER

KPD177328

DESCRIPTION

Power Divider, Resistive, 4 Way, N Female

CAGE CODE

664U0

SIGNATURE

X

Component
Body

Material
Aluminum

Plating/Finish
Nickel

THIS DRAWING INCLUDING THE
 DESIGNS IS THE PROPERTY OF
 KONNECT RF AND IS NOT TO
 BE USED FOR ANY PURPOSE
 WITHOUT OUR APPROVAL.