

PART NUMBER

KPD177149

REV.

DATE

COMMENTS

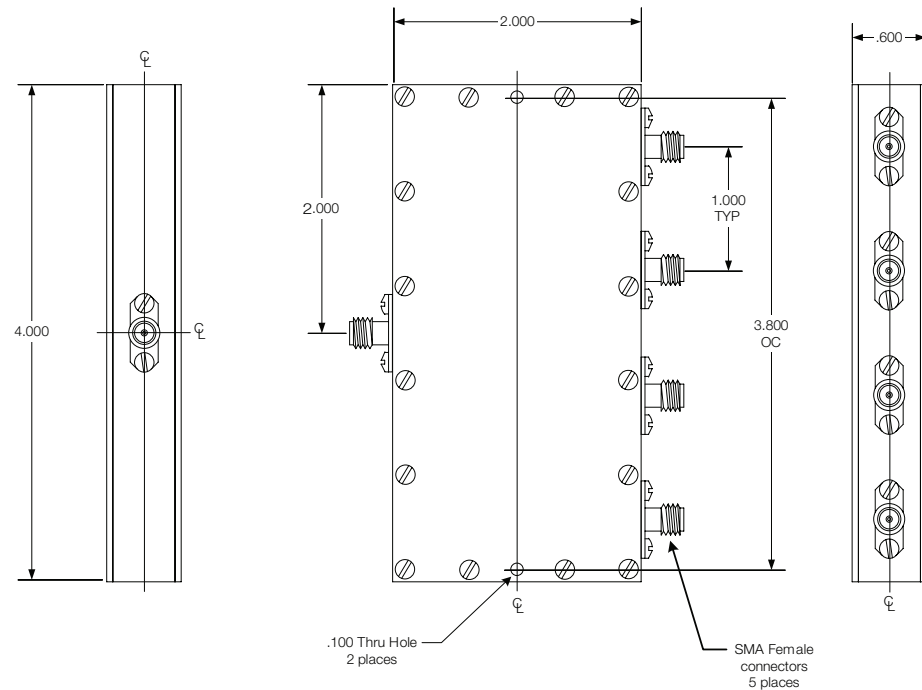
INITIAL

Electrical Data

Impedance 50 Ω
 Frequency Range DC - 6 GHz.
 Insertion Loss +/- 1.0 dB
 Amplitude Tracking +/- 0.5 dB Max.
 Input Power 1 Watt
 VSWR ≤ 1.50

Mechanical Data

Temperature Range: -20 $^{\circ}\text{C}$ - 100 $^{\circ}\text{C}$

RoHS Compliant

Drawing not to scale. Dimensions for reference only

Units: inches

Konnect RF

WWW.KONNECTRF.COM
 1-800-790-5887

PART NUMBER

KPD177149

DESCRIPTION

Power Divider, Resistive, 4 Way, SMA Female Jack

CAGE CODE

664U0

SIGNATURE

X

THIS DRAWING INCLUDING THE
 DESIGNS IS THE PROPERTY OF
 KONNECT RF AND IS NOT TO
 BE USED FOR ANY PURPOSE
 WITHOUT OUR APPROVAL.

Component

Body
 Conectors

Material

Aluminum
 Brass

Plating

Nickel
 Nickel