

PART NUMBER

KPD177020

REV.

DATE

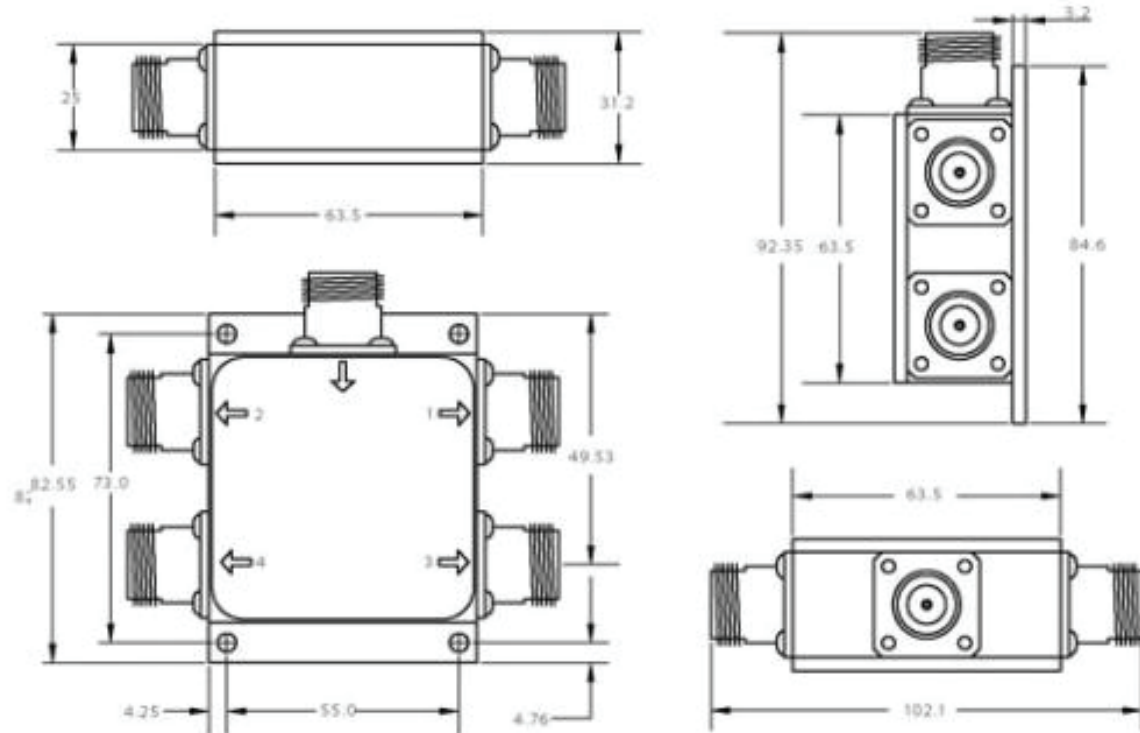
COMMENTS

INITIAL

Electrical Data

Impedance	50 Ω
Frequency Range	1.1 - 1.7 GHz.
Gain	0 dB / 3 dB / 5 dB / 10 dB typ.
Gain Flatness	1 dB (0 dB / Passive)
Insertion Loss, Passive	7.5 dB typ.
Isolation	18 dB min (Passive) 28 dB min (0 - 10 dB)
VSWR	1.5 (Input / Output)
Noise Figure - Amplified	3 dB max
Current Balance	0.5 dB
Phase Balance	1 deg
Group Delay Flatness	1 ns
RF Input (Nondestructive)	0 dBm max - Amplified 30 dBm max - Passive
AC In put	220 VAC
DC Input	3~14VDC(DC Blocking, all ports have a 200ohms resistor 3~16VDC(Through DC, after amplification) 3~16VDC(Through direct current, passive with power, specify)
Device Current	16 mA max
Electric Current	250 mA max (DC pass, without power, J1 side through DC)

RoHS Compliant

**Drawing not to scale. Dimensions for reference only****Units: mm****Konnect RF****WWW.KONNECTRF.COM**
1-800-790-5887

PART NUMBER

KPD177020

DESCRIPTION

Power Divider, 4 Way, SMA Female (Input), SMA Female (Output)

CAGE CODE

664U0

SIGNATURE

X

THIS DRAWING INCLUDING THE
DESIGNS IS THE PROPERTY OF
KONNECT RF AND IS NOT TO
BE USED FOR ANY PURPOSE
WITHOUT OUR APPROVAL.