

PART NUMBER

KIS177110

REV.

DATE

COMMENTS

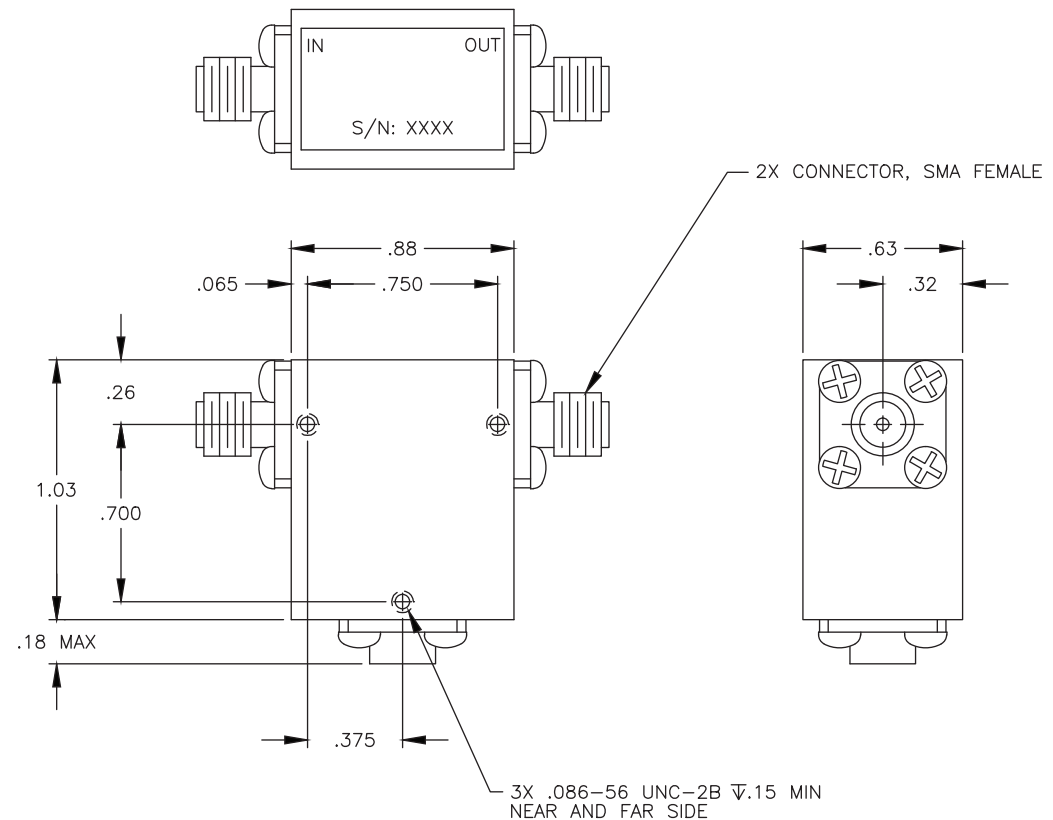
INITIAL

RoHS Compliant**Electrical Data**

Frequency Range	4.0-8.0 GHz.
Insertion Loss	0.4 dB Max
Isolation	20 dB Min
Power	50W AVG/200W PK FWD 10W AVG REV
VSWR	1.25 Max

Mechanical Data

Temperature Range:	-20 °C - 75 °C
--------------------	----------------



Drawing not to scale. Dimensions for reference only

Units: inches

Konnect RF

WWW.KONNECTRF.COM
1-800-790-5887

PART NUMBER

KIS177110

DESCRIPTION

Isolator, C Band, SMA Female Jack

CAGE CODE

664U0

SIGNATURE

X

THIS DRAWING INCLUDING THE
DESIGNS IS THE PROPERTY OF
KONNECT RF AND IS NOT TO
BE USED FOR ANY PURPOSE
WITHOUT OUR APPROVAL.