

PART NUMBER

**KIS177012**

REV.

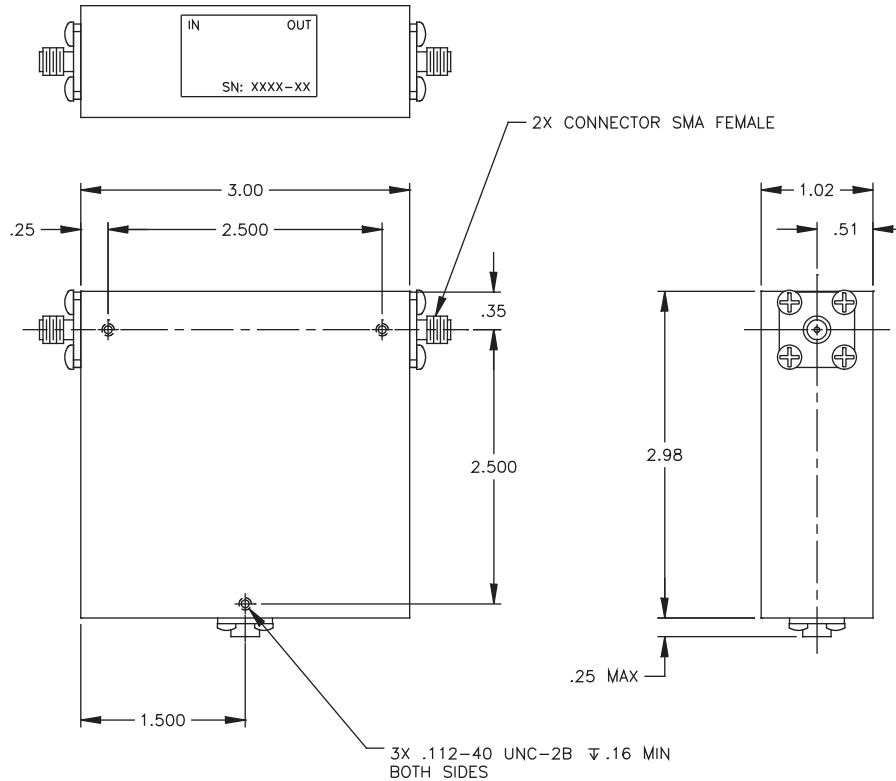
DATE

COMMENTS

INITIAL

**Electrical Data**

Impedance	50 $\Omega$
Frequency Range	1.0-2.0 GHz.
Insertion Loss	.5dB Max
Isolation	18 dB Min
Power	100W FWD, 10W REV.
VSWR	1.30 Max

**RoHS Compliant****Mechanical Data**

Temperature Range:	-0 °C - 60 °C
--------------------	---------------

Drawing not to scale. Dimensions for reference only

Units: inches

**Konnnect RF**

WWW.KONNECTRF.COM  
1-800-790-5887

PART NUMBER

**KIS177012**

DESCRIPTION

**Isolator,L Band, SMA Female Jack**

CAGE CODE

**664U0**

SIGNATURE

X

THIS DRAWING INCLUDING THE  
DESIGNS IS THE PROPERTY OF  
KONNECT RF AND IS NOT TO  
BE USED FOR ANY PURPOSE  
WITHOUT OUR APPROVAL.