

PART NUMBER

**KFL177312**

REV.

DATE

COMMENTS

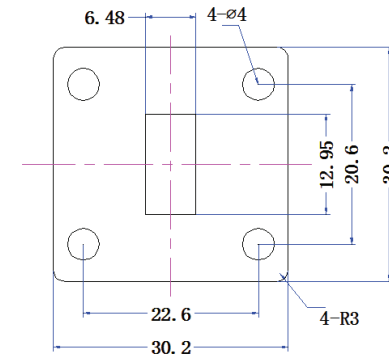
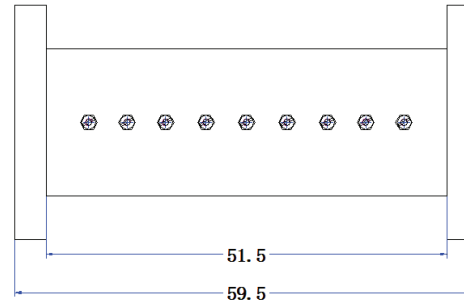
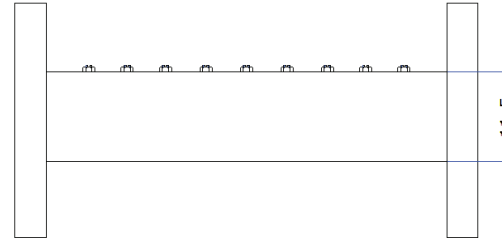
INITIAL

**Electrical Data**

Frequency Range	19.3 - 19.4 GHz.
Insertion Loss	≤ 0.5 dB
Ripple in Band	≤ 0.3 dB
Rejection	≥ 40 dB @ 29.1-29.5 GHz
VSWR	≤ 1.2

**Mechanical Data**

Temperature Range: -20 °C - 65 °C

**RoHS Compliant**

Tolerance ± 0.5mm

Drawing not to scale. Dimensions for reference only

Units: mm

**Konnect RF**

WWW.KONNECTRF.COM  
1-800-790-5887

PART NUMBER

**KFL177312**

DESCRIPTION

**Filter, Cavity, WR51 Port Connectors**

CAGE CODE

**664U0**

SIGNATURE

X

THIS DRAWING INCLUDING THE  
DESIGNS IS THE PROPERTY OF  
KONNECT RF AND IS NOT TO  
BE USED FOR ANY PURPOSE  
WITHOUT OUR APPROVAL.