

PART NUMBER

KFL177228

REV.

DATE

COMMENTS

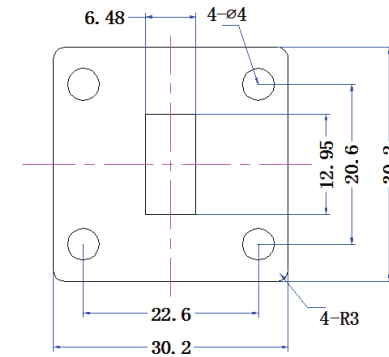
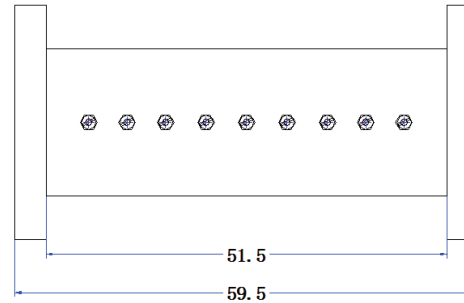
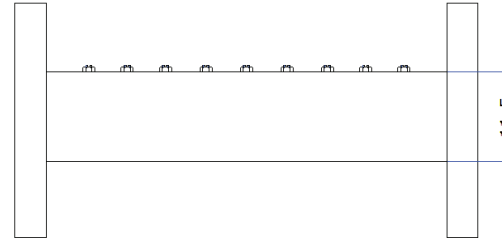
INITIAL

Electrical Data

Frequency Range	19.6 - 19.7 GHz.
Insertion Loss	≤ 0.5 dB
Ripple in Band	≤ 0.3 dB
Rejection	≥ 40 dB @ 29.1-29.5 GHz
VSWR	≤ 1.2

Mechanical Data

Temperature Range: -20 °C - 65 °C

RoHS Compliant

Drawing not to scale. Dimensions for reference only

Units: mm

Konnect RF

WWW.KONNECTRF.COM
1-800-790-5887

PART NUMBER

KFL177228

DESCRIPTION

Filter, Cavity, WR51 Port Connectors

CAGE CODE

664U0

SIGNATURE

X

THIS DRAWING INCLUDING THE
DESIGNS IS THE PROPERTY OF
KONNECT RF AND IS NOT TO
BE USED FOR ANY PURPOSE
WITHOUT OUR APPROVAL.