

PART NUMBER

**KFL177108**

REV.

DATE

COMMENTS

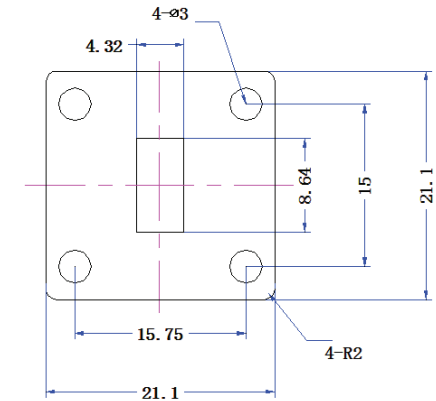
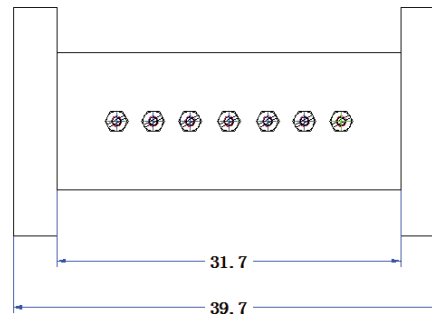
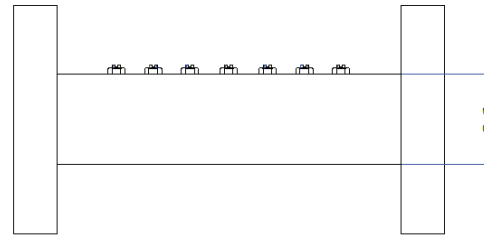
INITIAL

**Electrical Data**

Frequency Range	29.1 - 29.2 GHz.
Insertion Loss	≤ 0.5 dB
Ripple in Band	≤ 0.3 dB
Rejection	≥90 dB @ 19.3-19.7 GHz
VSWR	≤ 1.2

**Mechanical Data**

Temperature Range: -20 °C - 65 °C

**RoHS Compliant**

Tolerance ± 0.5mm

Drawing not to scale. Dimensions for reference only

Units: mm

**Konnect RF**WWW.KONNECTRF.COM  
1-800-790-5887

PART NUMBER

**KFL177108**

DESCRIPTION

**Filter, Cavity, WR34 Port Connectors**

CAGE CODE

**664U0**

SIGNATURE

X

THIS DRAWING INCLUDING THE DESIGNS IS THE PROPERTY OF KONNECT RF AND IS NOT TO BE USED FOR ANY PURPOSE WITHOUT OUR APPROVAL.