

PART NUMBER

**KDCB177201**

REV.

DATE

COMMENTS

INITIAL

**Electrical Data**

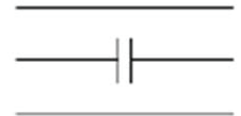
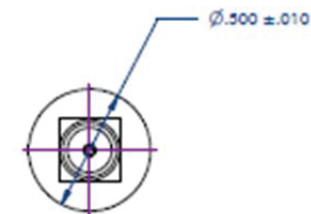
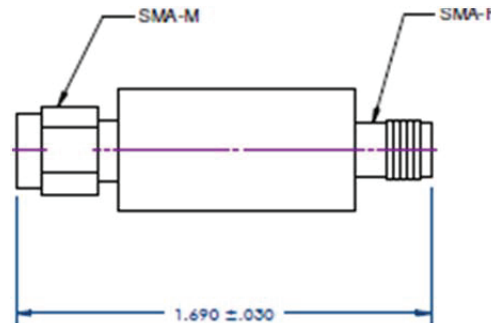
Impedance	50 $\Omega$
Frequency Range	2.6 - 6.5 GHz.
Insertion Loss	0.2 dB max
Average Power	50 Watts
Peak Power	1 kiloWatt max
Blocking Voltage	1,000 Volts
Forward Average Power	50 Watts max
Passive Intermodulation	Unspecified
Type of DC Block	Inner
VSWR	1.3 Max

\*Input Power Is Rated For Load VSWR of 1.20:1 Max

\*\*Insertion Loss Excludes Coupling/Split Loss

**Mechanical Data**

Temperature Range:	-40 °C - 85 °C
Environment	Indoor use only
Humidity	90% Non-Condensing



FUNCTIONAL SCHEMATIC

**RoHS Compliant**

Drawing not to scale. Dimensions for reference only

Units: inches

**Konnect RF**

WWW.KONNECTRF.COM  
1-800-790-5887

PART NUMBER

**KDCB177201**

DESCRIPTION

**DC Block, SMA M/F**

CAGE CODE

**664U0**

SIGNATURE

X

THIS DRAWING INCLUDING THE  
DESIGNS IS THE PROPERTY OF  
KONNECT RF AND IS NOT TO  
BE USED FOR ANY PURPOSE  
WITHOUT OUR APPROVAL.

**Component**

Connector Body  
Center Contact  
Housing  
Insulator

**Material**

Brass  
  
Aluminum 6061-T6  
PTFE

**Plating**

Gold  
Gold  
Gray Acrylic