

PART NUMBER

**KCC198108**

REV.

DATE

COMMENTS

INITIAL

RoHS Compliant

**Electrical Data**

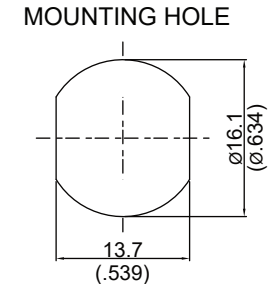
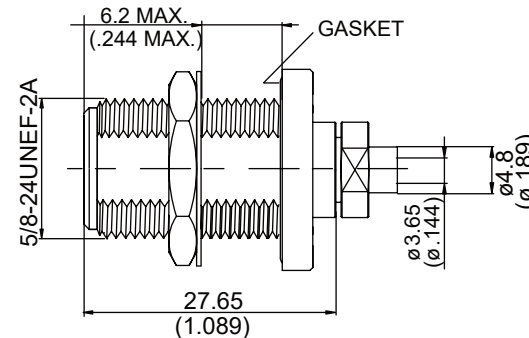
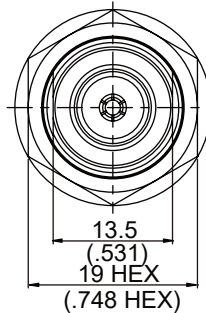
Impedance	50 $\Omega$
Frequency Range	DC - 11 GHz.
Insertion Loss	$\leq 0.05 \times f(\text{GHz})$ dB
Working Voltage(at sea level)	1000 VRMS
Contact Resistance	
Inner	$\leq 1.5$ m $\Omega$
Outer	$\leq 1$ m $\Omega$
Insulation Resistance	$\geq 5000$ M $\Omega$
Dielectric Withstanding Voltage (at sea level)	2500 VRMS
VSWR	$\leq 1.2$ (DC to 11 GHz)

**Mechanical Data**

Temperature Range:	-65 °C - 165 °C
Recommended coupling nut torque	6 to 10 inch lbs
Coupling proof torque	15 inch lbs
Contact captivation-axial	$\geq 6.3$ lbs
Durability (mating)	$\geq 500$
Thermal Shock	MIL-STD-202, Method 107, Condition B
Moisture Resistance	MIL-STD-202, Method 106
Corrosion	MIL-STD-202, Method 101, Condition B

**Tooling**

Soldering Guage	ST - 0.5
Locator tool	ST - 011
Soldering fixture	ST - 008
Insert for .141 Semi rigid cable	ST - 010, ST - N83



**VSWR and Frequency Range Specifications  
are for reference and are dependant on cable  
type and other application specific conditions**

**Drawing not to scale. Dimensions for reference only**

**Units: mm (inches)**

**WWW.KONNECTRF.COM**  
**1-800-790-5887**

PART NUMBER

**KCC198108**

DESCRIPTION

**N Straight Female Jack, Bulkhead, Clamp/Solder**

CAGE CODE

**664U0**

SIGNATURE

X

**Cable: .141 Conformable (RG-402)****Component**

Body  
Insulator  
Contact Pin  
  
Solder Nut  
  
Gasket  
Lock Washer  
Hex Nut

**Material**

Brass  
Teflon  
BeCu  
  
Brass  
  
Silicon  
Brass  
Brass

**Plating**

White Bronze  
  
Gold 4 over Nickel-Phosphorus  
Alloy 80 over Copper 20  
Gold 4 over Nickel-Phosphorus  
Alloy 80 over Copper 20  
  
White Bronze  
White Bronze

THIS DRAWING INCLUDING THE  
DESIGNS IS THE PROPERTY OF  
KONNECT RF AND IS NOT TO  
BE USED FOR ANY PURPOSE  
WITHOUT OUR APPROVAL.