

PART NUMBER

KCC197992

REV.

DATE

COMMENTS

INITIAL

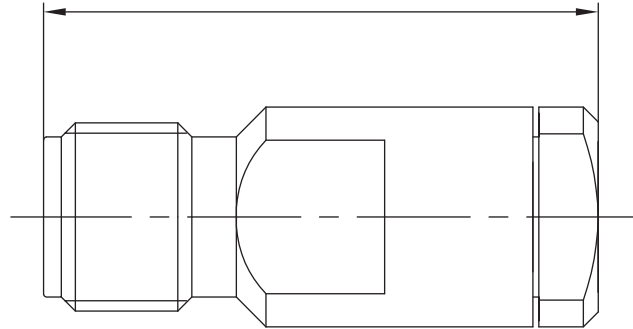
Electrical Data

Impedance 50 Ω
 Frequency Range DC - 40 GHz.
 Insulation Resistance 5,000 M Ω min
 Dielectric Withstanding Voltage 1,000V Max At Sea Level

RoHS Compliant**Mechanical Data**

Temperature Range: -55 °C - 125 °C

18.7 [.736"]



VSWR and Frequency Range Specifications
 are for reference and are dependant on cable
 type and other application specific conditions

Drawing not to scale. Dimensions for reference only Units: mm (Inches)

WWW.KONNECTRF.COM
 1-800-790-5887

PART NUMBER

KCC197992

DESCRIPTION

2.92mm Straight Female Jack

CAGE CODE

664U0

SIGNATURE

X

Cable Types: .141 S/R**Component**

Body
 Center Contact
 Insulator

Material

Stainless Steel
 BeCu
 PEI

Plating/Finish

Passivated
 Gold

THIS DRAWING INCLUDING THE
 DESIGNS IS THE PROPERTY OF
 KONNECT RF AND IS NOT TO
 BE USED FOR ANY PURPOSE
 WITHOUT OUR APPROVAL.