

PART NUMBER

KCC197980

REV.

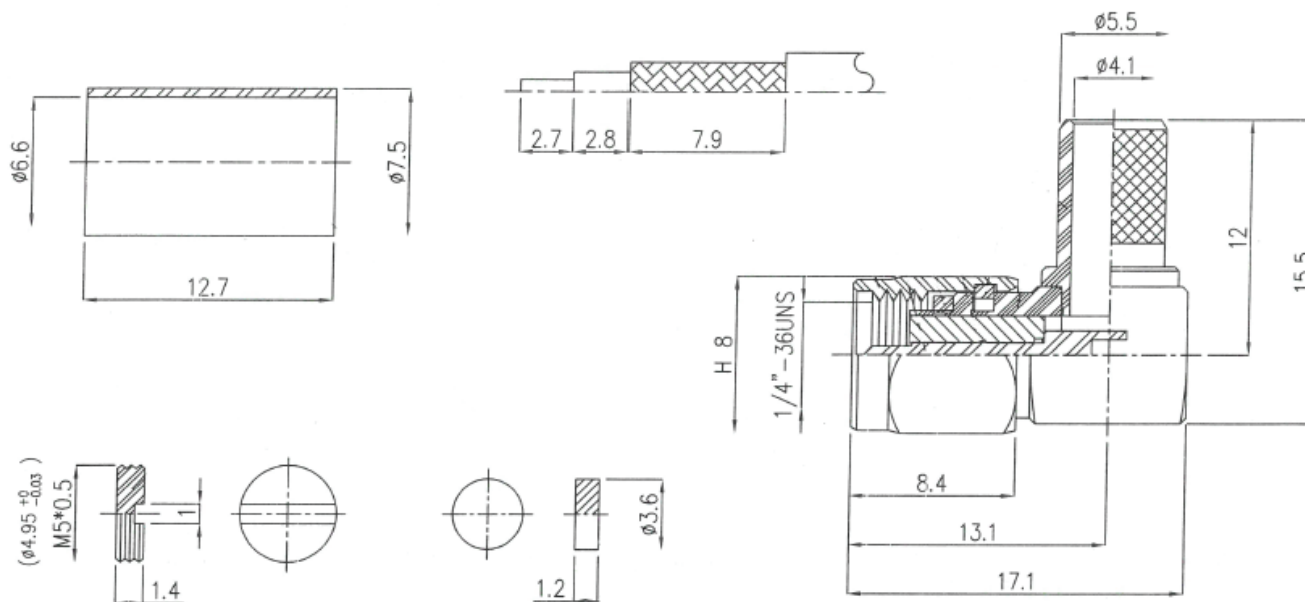
DATE

COMMENTS

INITIAL

Electrical Data

Impedance

50 Ω **RoHS Compliant**

VSWR and Frequency Range Specifications
are for reference and are dependant on cable
type and other application specific conditions

Drawing not to scale. Dimensions for reference only

Units: mm

Konnnect RF

WWW.KONNECTRF.COM
1-800-790-5887

PART NUMBER

KCC197980

DESCRIPTION

SMA Right Angle Male Plug, Crimp

CAGE CODE

664U0

SIGNATURE

X

THIS DRAWING INCLUDING THE
DESIGNS IS THE PROPERTY OF
KONNECT RF AND IS NOT TO
BE USED FOR ANY PURPOSE
WITHOUT OUR APPROVAL.

Cable Types: LMR-240**Component**

Body 1 & 2
Center Contact
Retaining Ring
Gasket
Shell
Ferrule
CIR Nut
Insulator

Material

Brass
Brass
Brass
Silicone
Brass
Brass
Brass
PTFE

Plating

Gold
Gold
Gold
Gold
Gold
Gold
Gold