

PART NUMBER

KCC197847

REV.

DATE

COMMENTS

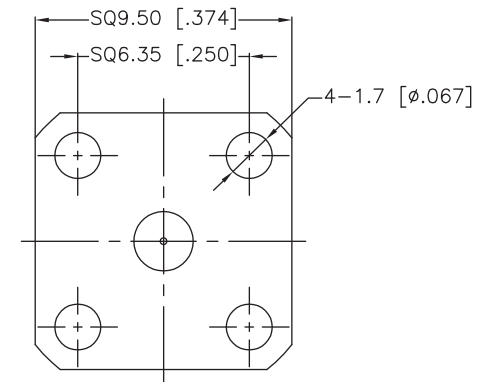
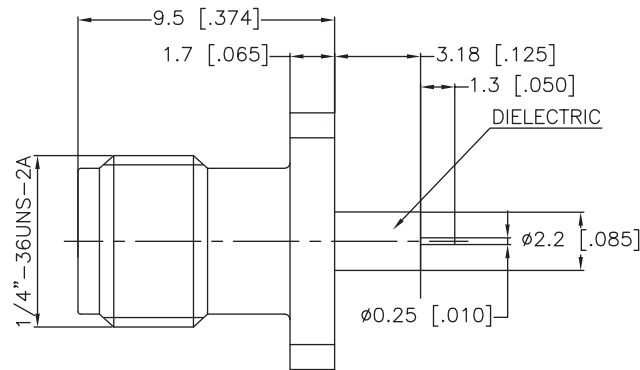
INITIAL

Electrical Data

Impedance	50 Ω
Frequency Range	DC - 18 GHz.
Insulation Resistance	5,000 M Ω min
Dielectric Withstanding Voltage	1,000V Max At Sea Level
VSWR	≤ 1.14
Insertion Loss	$\leq 0.127\text{dB @ 18GHz}$

Mechanical Data

Temperature Range: -55 °C - 165 °C

RoHS Compliant

Drawing not to scale. Dimensions for reference only

Units: inches (mm)

Konnect RFWWW.KONNECTRF.COM
1-800-790-5887

PART NUMBER

KCC197847

DESCRIPTION

**SMA Straight Female Jack Receptacle,
4 Hole Flange Mount , Extended Teflon**

CAGE CODE

664U0

SIGNATURE

X

THIS DRAWING INCLUDING THE
DESIGNS IS THE PROPERTY OF
KONNECT RF AND IS NOT TO
BE USED FOR ANY PURPOSE
WITHOUT OUR APPROVAL.**Component**Body
Center Contact
Insulator**Material**Brass
BeCu
PTFE**Plating**Gold
Gold