

PART NUMBER

**KCC197757**

REV.

DATE

COMMENTS

INITIAL

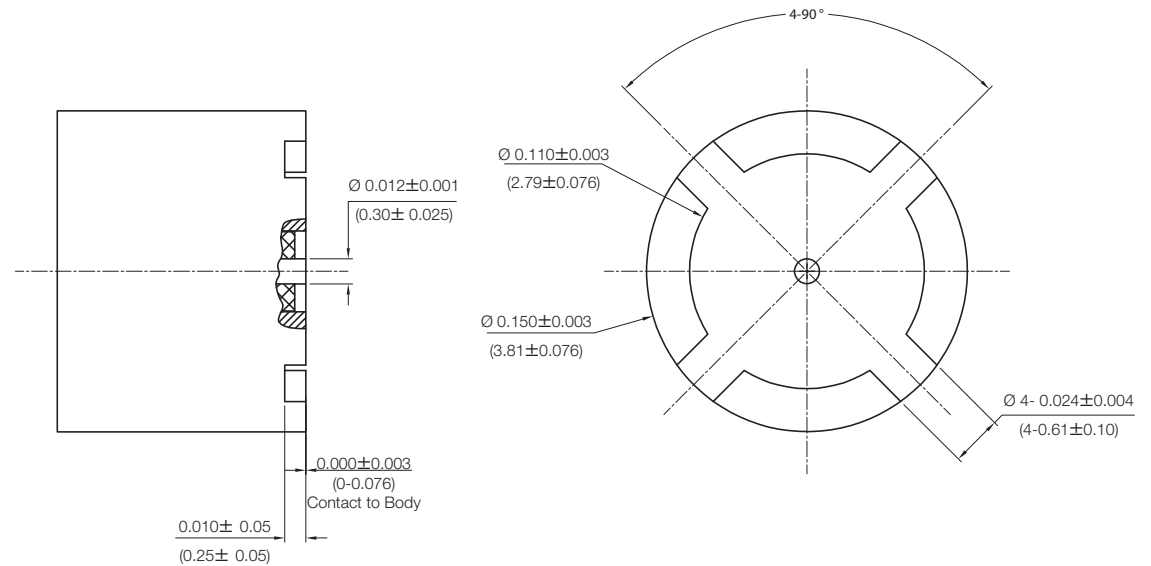
RoHS Compliant

**Electrical Data**

Impedance 50  $\Omega$   
 Frequency Range DC - 26.5 GHz  
 VSWR  $\leq 1.50$

**Mechanical Data**

Temperature Range -55  $^{\circ}\text{C}$  - 125  $^{\circ}\text{C}$



Drawing not to scale. Dimensions for reference only

Units: inches (mm)

**Konnnect RF**

WWW.KONNECTRF.COM  
 1-800-790-5887

PART NUMBER

**KCC197757**

DESCRIPTION

**Connector, SMPM Straight Male, Full Detent, Surface Mount**

CAGE CODE

**664U0**

SIGNATURE

X

**Component**  
 Body  
 Center Contact  
 Insulator

**Material**  
 BeCu  
 BeCu  
 PTFE

**Plating**  
 Gold  
 Gold

THIS DRAWING INCLUDING THE  
 DESIGNS IS THE PROPERTY OF  
 KONNECT RF AND IS NOT TO  
 BE USED FOR ANY PURPOSE  
 WITHOUT OUR APPROVAL.