

PART NUMBER

KCC197624

REV.

DATE

COMMENTS

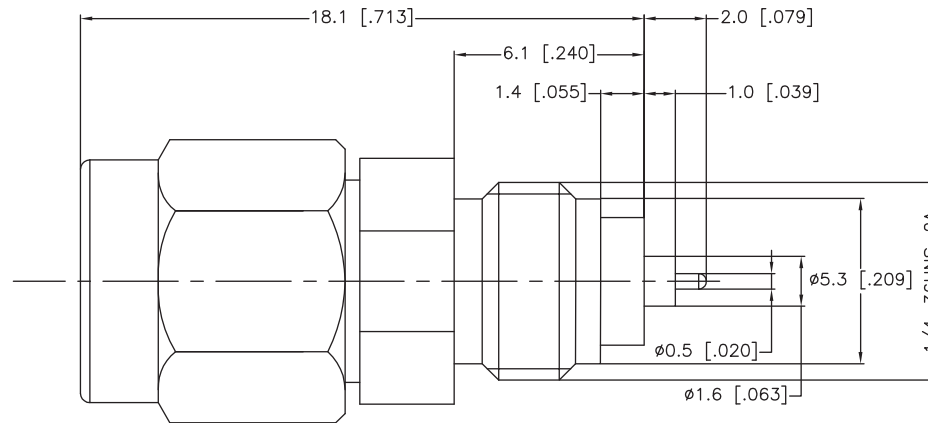
INITIAL

Electrical Data

Impedance 50 Ω
 Frequency Range DC - 18 GHz.
 Insertion Loss $0.04\sqrt{\text{Frequency}}$
 Insulation Resistance 5,000 M Ω
 Dielectric Withstanding Voltage 1,000 Max At Sea Level
 VSWR $1.04 + [.009F(\text{GHz})]$ Max

Mechanical Data

Durability 500 Cycles Min.
 Temperature Range: -65 °C - 125 °C

RoHS Compliant

Drawing not to scale. Dimensions for reference only

Units: mm (Inches)

Konnect RF

WWW.KONNECTRF.COM
 1-800-790-5887

PART NUMBER

KCC197624

DESCRIPTION

**SMA Straight Male Plug, Bulkhead, Spark Plug,
 Receptacle, Hermetically Sealed**

CAGE CODE

664U0

SIGNATURE

X

THIS DRAWING INCLUDING THE
 DESIGNS IS THE PROPERTY OF
 KONNECT RF AND IS NOT TO
 BE USED FOR ANY PURPOSE
 WITHOUT OUR APPROVAL.

Component

Body & Nut
 Center Contact
 Insulator

Material

Stainless Steel
 BeCu
 PTFE

Plating

Passivated
 Gold