

PART NUMBER

**KCC197240**

REV.

DATE

COMMENTS

INITIAL

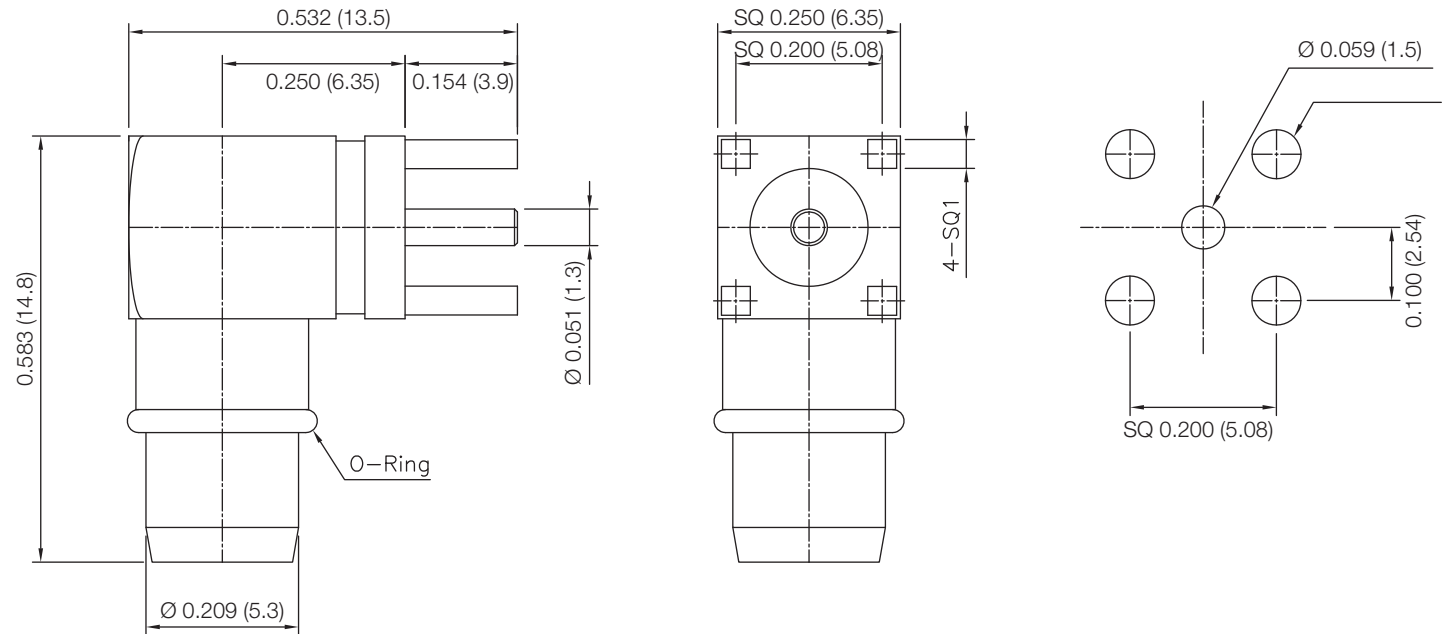
**Electrical Data**

Impedance 50  $\Omega$   
 Frequency Range DC - 3 GHz.  
 VSWR 1.2:1 max @ 3 GHz

**Mechanical Data**

Durability 500 matings  
 Temperature Range: -45 °C - 125 °C  
 Center Contact Retention Axial 6 lbs

RoHS Compliant



Drawing not to scale. Dimensions for reference only

Units: inches (mm)

**Konnect RF**

WWW.KONNECTRF.COM  
 1-800-790-5887

PART NUMBER

**KCC197240**

DESCRIPTION

**BMA Right Angle Male Jack, 4 Leg PC Board Receptacle**

CAGE CODE

**664U0**

SIGNATURE

X

**Component**  
 Body  
 Center Contact  
 Insulator

**Material**  
 Brass  
 Brass  
 PTFE

**Plating**  
 Gold  
 Gold

THIS DRAWING INCLUDING THE  
 DESIGNS IS THE PROPERTY OF  
 KONNECT RF AND IS NOT TO  
 BE USED FOR ANY PURPOSE  
 WITHOUT OUR APPROVAL.