

PART NUMBER

KCC197233

REV.

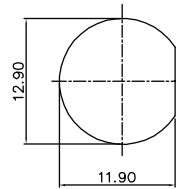
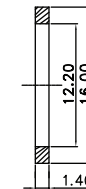
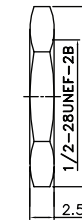
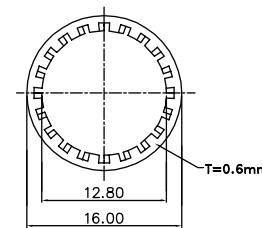
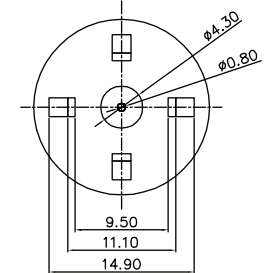
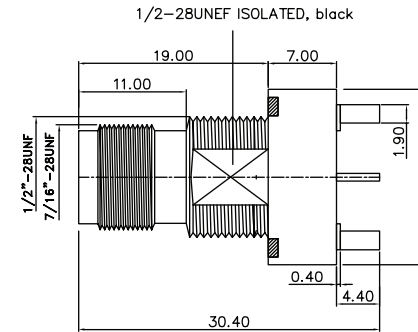
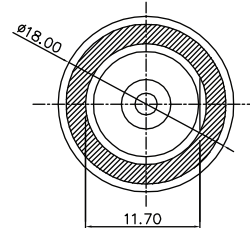
DATE

COMMENTS

INITIAL

Electrical Data

Impedance 75Ω

RoHS CompliantRecommended
Mount Hole

Drawing not to scale. Dimensions for reference only

Units: mm

Konnect RFWWW.KONNECTRF.COM
1-800-790-5887

PART NUMBER

KCC197233

DESCRIPTION

TNC Straight Female Jack, Bulkhead, PCB Receptacle, IP67, 75ohm

CAGE CODE

664U0

SIGNATURE

X

THIS DRAWING INCLUDING THE
DESIGNS IS THE PROPERTY OF
KONNECT RF AND IS NOT TO
BE USED FOR ANY PURPOSE
WITHOUT OUR APPROVAL.**Component**Body & Nut
Center Contact
Insulator
1/2-28UNEF Isolated
Washer
Gasket**Material**Brass
Brass
Teflon
POM
Steel
Silicone**Plating**Nickel
Gold
Black
Nickel
Black