

PART NUMBER

KCC197159

REV.

DATE

COMMENTS

INITIAL

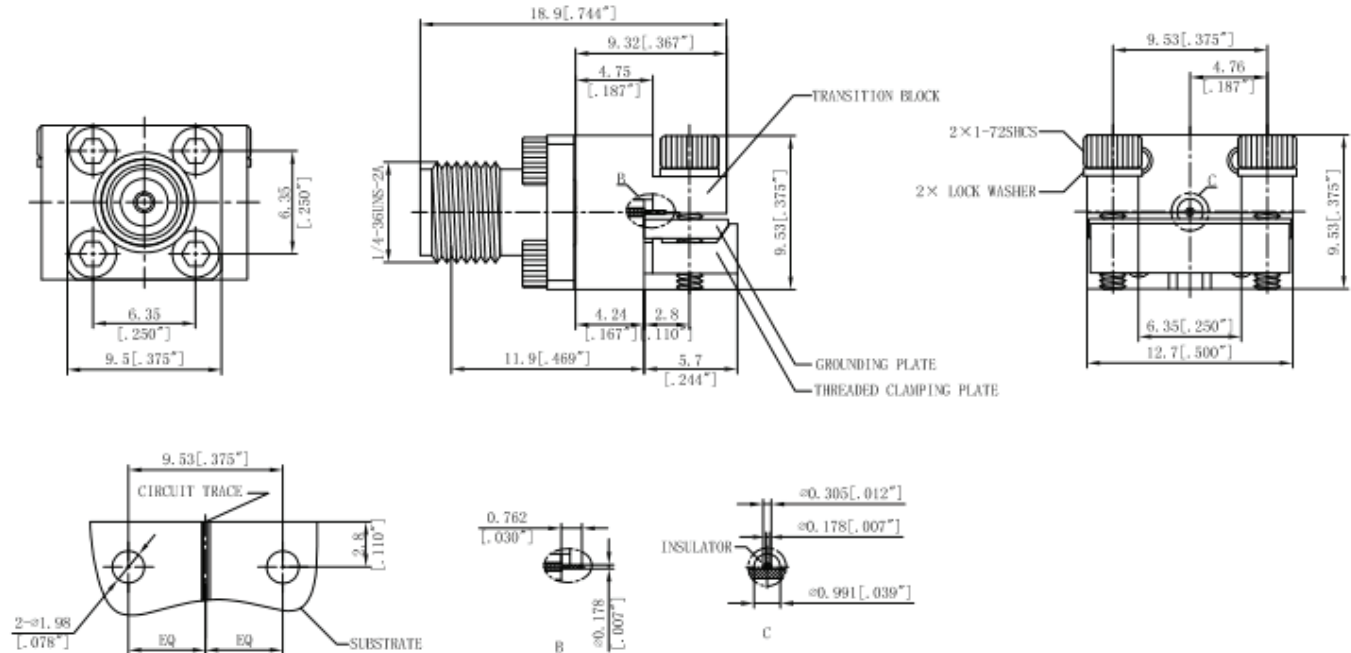
Electrical Data

Impedance 50 Ω
 Frequency Range DC - 26.5 GHz.
 Insulation Resistance \geq 5000 M Ω
 Dielectric Withstanding Voltage 1000 VRMS

Mechanical Data

Durability 500 Cycles
 Temperature Range: -55 °C - 165 °C

RoHS Compliant



Drawing not to scale. Dimensions for reference only

Units: mm (inches)

Konnect RF

WWW.KONNECTRF.COM
 1-800-790-5887

PART NUMBER

KCC197159

DESCRIPTION

SMA Straight Female Jack End Launch PC Board Receptacle

CAGE CODE

664U0

SIGNATURE

X

Component
 Body
 Center Contact
 Insulator

Material
 Stainless Steel
 BeCu
 PTFE

Plating
 Passivated
 Gold

THIS DRAWING INCLUDING THE
 DESIGNS IS THE PROPERTY OF
 KONNECT RF AND IS NOT TO
 BE USED FOR ANY PURPOSE
 WITHOUT OUR APPROVAL.