

PART NUMBER

**KCC197032**

REV.

DATE

COMMENTS

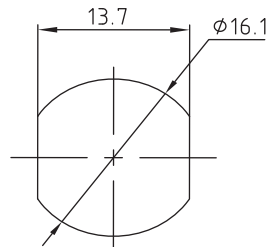
INITIAL

**Electrical Data**

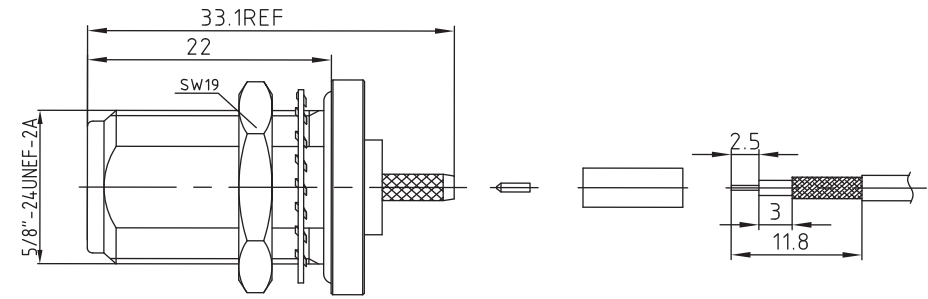
Impedance	50 $\Omega$
Frequency Range	DC -11GHz.
Insertion Loss	0.08XSQRT[F(GHz)]dB Max
Voltage Rating	500 VRMS
Insulation Resistance	5,000 M $\Omega$ min
Dielectric Withstanding Voltage	1,000 VRMS Min

**Mechanical Data**

Durability	100 Cycles Min.
Temperature Range:	-55 °C - 125 °C
Panel Seal:	Waterproof Up to 3 Meters for 2 Hours
Un-mated Interface seal :	water proof up to 3 meters for 2 hours



Mounting Hole

**RoHS Compliant**

Drawing not to scale. Dimensions for reference only

Units: mm

**Konnect RF**

WWW.KONNECTRF.COM  
1-800-790-5887

PART NUMBER

**KCC197032**

DESCRIPTION

**N Straight Female Jack, Bulkhead Rear Mount,  
O-Ring Seal, Waterproof, Crimp**

CAGE CODE

**664U0**

SIGNATURE

X

THIS DRAWING INCLUDING THE  
DESIGNS IS THE PROPERTY OF  
KONNECT RF AND IS NOT TO  
BE USED FOR ANY PURPOSE  
WITHOUT OUR APPROVAL.

**Cable Types:** RG-316**Component**

Body  
Outer Contact  
Inner Contact  
Gasket  
O-Ring  
Insulator

**Material**

Brass  
Brass  
BeCu  
Silicone Rubber  
Silicone Rubber  
PTFE

**Plating**

White Bronze  
White Bronze  
Gold