

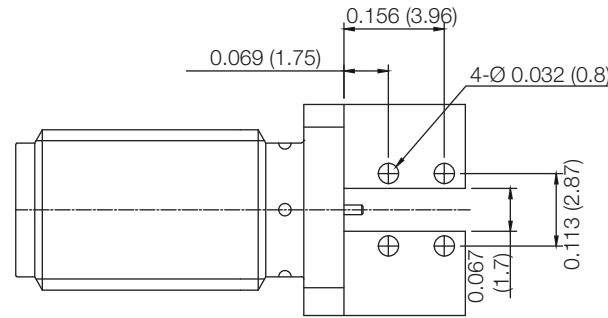
PART NUMBER
KCC189693

REV.	DATE	COMMENTS	INITIAL

Electrical Data

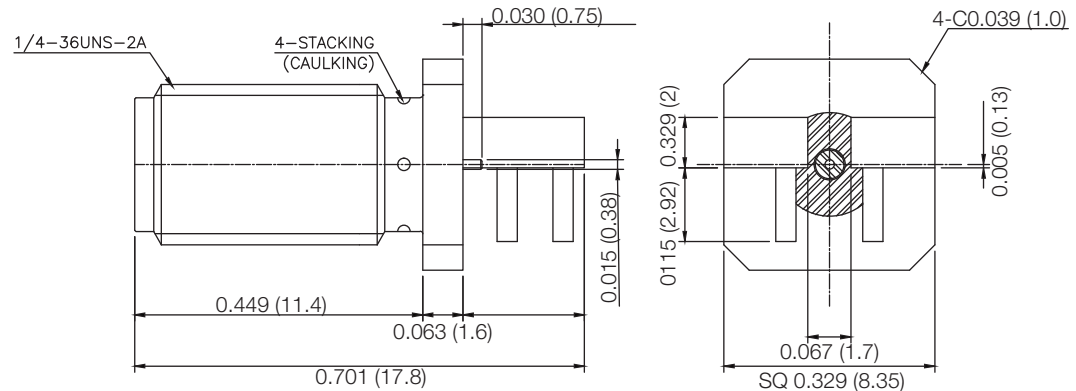
Impedance 50 Ω
 Frequency Range DC - 18 GHz
 Contact Current DC 2.0A max
 Working Voltage 750V
 Insertion Loss 0.05√ f(GHz)dB
 Contact Resistance
 Center 3.0 mΩ
 Outer 2.5 mΩ
 Insulation Resistance 5,000 MΩ min
 VSWR ≤ 1.50 Max @ 26.5GHz
 RF Leakage -60dBm min. between 2-3GHz

RoHS Compliant



Mechanical Data

Coupling Nut Torque 12Ncm-140Ncm
 Coupling Nut Retention Force ≥200N
 Life 500 matings
 Contact Captivation ≥27N



Environmental Data

Temperature Range -65 °C - 125 °C
 Corrosion Resistance MIL-STD-202, Method 101, Condition B.
 Moisture Resistance MIL-STD-202, Method 106
 Thermal Shock MIL-STD-202, Method 107, Condition B
 Vibration MIL-STD-202, Method 204, Condition D
 Shock MIL-STD-202, Method 213, Condition I

Drawing not to scale. Dimensions for reference only Units: inches (mm)



WWW.KONNECTRF.COM
1-800-790-5887

PART NUMBER KCC189693		DESCRIPTION SMA Straight Female Jack Edge Mount PC Board Receptacle, (0.062" Board), Tab Contact	
CAGE CODE 664U0	SIGNATURE X	Component	Material
THIS DRAWING INCLUDING THE DESIGNS IS THE PROPERTY OF KONNECT RF AND IS NOT TO BE USED FOR ANY PURPOSE WITHOUT OUR APPROVAL.		Body	Brass
		Center Contact	BeCu
		Insulator	PTFE
		Plating	Gold
			Gold