

PART NUMBER

**KCC189023**

REV.

DATE

COMMENTS

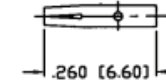
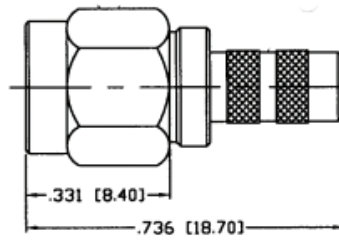
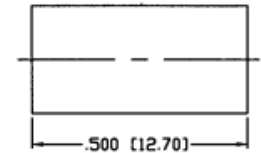
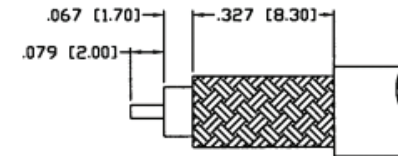
INITIAL

**Electrical Data**

Impedance	50 $\Omega$
Frequency Range	0-12.4 GHz.
Insertion Loss	$0.03 \times \sqrt{f(\text{GHz})}$
Working Voltage	500 VRMS Max @ Sea Level
Insulation Resistance	5,000 M $\Omega$ min
VSWR	1.3 Max

**Mechanical Data**

Temperature Range: -65 °C - 85 °C

RECOMMENDED  
PIN TO BE SOLDEREDRECOMMENDED  
CRIMP DIE: .213"RECOMMENDED  
STRIPPING DIMENSIONS

Drawing not to scale. Dimensions for reference only

Units: inches (mm)

**Konnect RF**WWW.KONNECTRF.COM  
1-800-790-5887

PART NUMBER

**KCC189023**

DESCRIPTION

**SMA Straight Male Plug Reverse Polarity, Crimp**

CAGE CODE

**664U0**

SIGNATURE

X

THIS DRAWING INCLUDING THE  
DESIGNS IS THE PROPERTY OF  
KONNECT RF AND IS NOT TO  
BE USED FOR ANY PURPOSE  
WITHOUT OUR APPROVAL.**Cable Types:** RG-55, 142, 223, & 400**Component**Body & Shell  
Ferrule  
Center Contact  
Gasket  
Retaining Ring  
Insulator**Material**Brass  
Brass  
BeCu  
Silicone  
BeCu**Plating**Gold  
Gold  
Gold