

PART NUMBER

KCC188587

REV.

DATE

COMMENTS

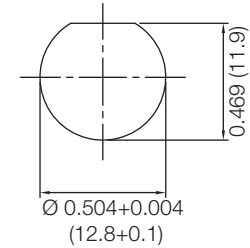
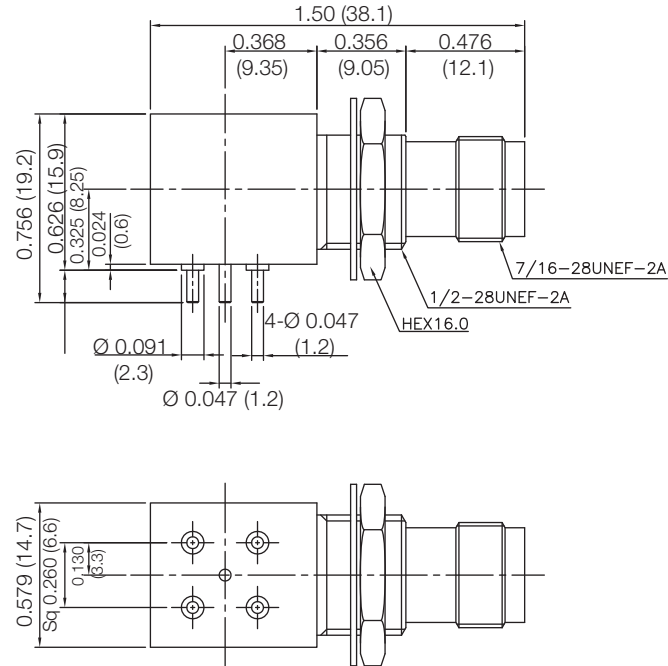
INITIAL

Electrical Data

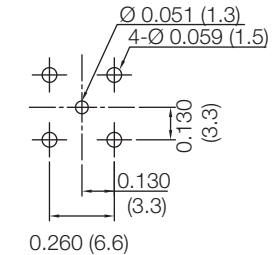
Impedance 50 Ω
 Frequency Range DC - 11 GHz.
 Dielectric Withstanding Voltage 1,500 VRMS

Mechanical Data

Durability 500 Cycles Min.
 Temperature Range: -45 °C - 125 °C

RoHS Compliant

Panel Mounting Hole



PCB Mounting Hole

Drawing not to scale. Dimensions for reference only

Units: inches (mm)

Konnect RF

WWW.KONNECTRF.COM
 1-800-790-5887

PART NUMBER

KCC188587

DESCRIPTION

TNC Right Angle Female Jack 4 Leg PC Board Receptacle, Bulkhead Rear Mount

CAGE CODE

664U0

SIGNATURE

X

THIS DRAWING INCLUDING THE
 DESIGNS IS THE PROPERTY OF
 KONNECT RF AND IS NOT TO
 BE USED FOR ANY PURPOSE
 WITHOUT OUR APPROVAL.

Component
 Body & Nut
 Center Contact
 Leg
 Insulator

Material
 Brass
 BeCu
 Brass
 PTFE

Plating
 Nickel
 Gold
 Tin