

PART NUMBER

KCC188573

REV.

DATE

COMMENTS

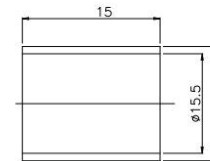
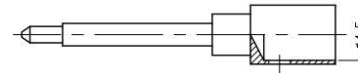
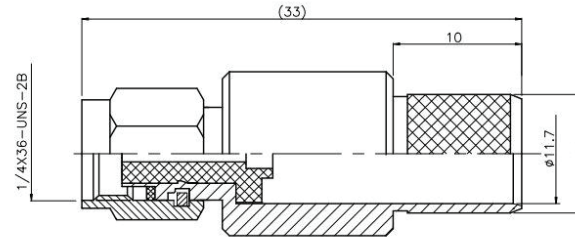
INITIAL

Electrical Data

Impedance	50 Ω
Frequency Range	DC - 12.4 GHz.
Contact Resistance	
Center	$\leq 3 \text{ m}\Omega$
Outer	$\leq 2.5 \text{ m}\Omega$
Dielectric Resistance	$\geq 5,000 \text{ M}\Omega$
Dielectric Withstanding Voltage	$\geq 1,000 \text{ VRMS}, 50\text{Hz @ Sea Level}$
VSWR	$\leq 1.20 \text{ @ DC-3 GHz}$ $\leq 1.35 \text{ @ DC-6 GHz}$

RoHS Compliant**Mechanical Data**

Temperature Range:	-40 °C - 85 °C
Durability	≥ 500 Mating Cycles



VSWR and Frequency Range Specifications are for reference and are dependant on cable type and other application specific conditions

Drawing not to scale. Dimensions for reference only

Units: mm

Konnect RF

WWW.KONNECTRF.COM
1-800-790-5887

PART NUMBER

KCC188573

DESCRIPTION

SMA Straight Male Plug, Crimp

CAGE CODE

664U0

SIGNATURE

X

THIS DRAWING INCLUDING THE DESIGNS IS THE PROPERTY OF KONNECT RF AND IS NOT TO BE USED FOR ANY PURPOSE WITHOUT OUR APPROVAL.

Cable Type: LMR-600**Component**

Body & Coupling Nut
Center Contact
Ferrule
Gasket
Insulator

Material

Brass
Phos. Copper
Copper
Silicone Rubber
PTFE

Plating

Gold
Gold
Nickel