

PART NUMBER

KCC188338

REV.

DATE

COMMENTS

INITIAL

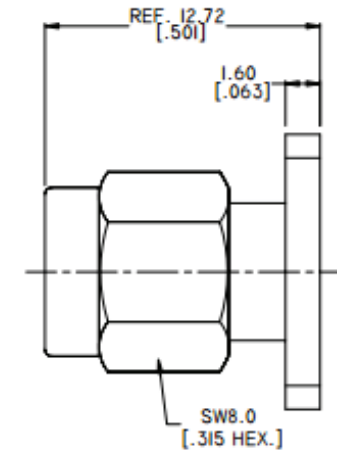
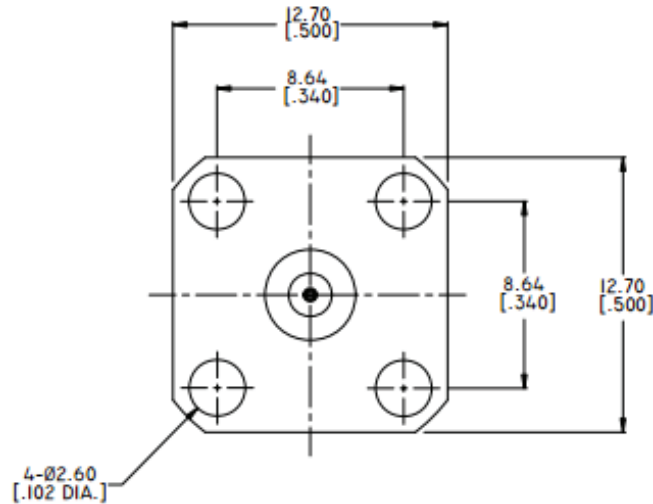
Electrical Data

Impedance 50 Ω
 Frequency Range DC - 27 GHz.
 Dielectric Withstanding Voltage 1,000 V
 VSWR 1.10 max @ DC-18 GHz
 1.15 max @ 18-27 GHz

RoHS Compliant**Mechanical Data**

Temperature Range: -55 °C - 165 °C

Part No.	Accepts Pin	Pin Depth
KCC188338	\varnothing 0.38 (.015)	2.54 (.100)



Drawing not to scale. Dimensions for reference only

Units: mm (inches)

Konnect RF

WWW.KONNECTRF.COM
 1-800-790-5887

PART NUMBER

KCC188338

DESCRIPTION

SMA Straight Male Plug Field Replaceable Receptacle, (0.015 Inch Pin), 4 Hole Flange Mount

CAGE CODE

664U0

SIGNATURE

X

THIS DRAWING INCLUDING THE DESIGNS IS THE PROPERTY OF KONNECT RF AND IS NOT TO BE USED FOR ANY PURPOSE WITHOUT OUR APPROVAL.

Component

Body
 Center Contact
 Coupling Nut
 Retaining Ring
 Insulator

Material

Stainless Steel
 BeCu
 Stainless Steel
 BeCu
 PTFE & PEI

Plating/Finish

Passivate
 Gold
 Passivated
 Nickel