

PART NUMBER

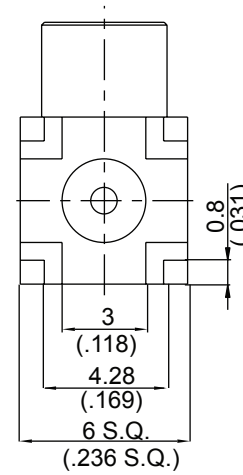
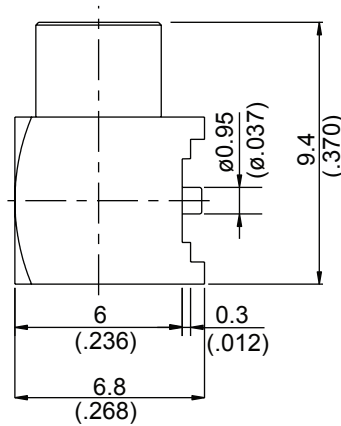
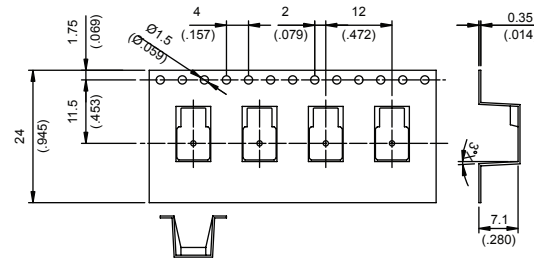
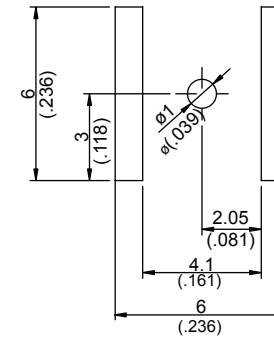
**KCC188324**

REV.

DATE

COMMENTS

INITIAL

**Electrical Data**Impedance 50  $\Omega$ **RoHS Compliant****PACKAGING****MOUNTING HOLE :**

Drawing not to scale. Dimensions for reference only

Units: mm (Inches)

**Konnnect RF**WWW.KONNECTRF.COM  
1-800-790-5887

PART NUMBER

**KCC188324**

DESCRIPTION

**MCX Right-Angle Female Jack, Surface Mount PC Board Receptacle**

CAGE CODE

**664U0**

SIGNATURE

X

THIS DRAWING INCLUDING THE  
DESIGNS IS THE PROPERTY OF  
KONNECT RF AND IS NOT TO  
BE USED FOR ANY PURPOSE  
WITHOUT OUR APPROVAL.**Component**Body  
Housing  
Contact Pin  
Cover  
Insulator**Material**Brass  
Brass  
Phosphor Bronze  
Brass  
PTFE**Plating (Micro-Inches)**Gold 5 Over Nickel 50 Over Copper 50  
Gold 5 Over Nickel 50 Over Copper 50  
Gold 5 Over Nickel 50 Over Copper 50  
Gold 5 Over Nickel 50 Over Copper 50