

PART NUMBER

**KAD178430**

REV.

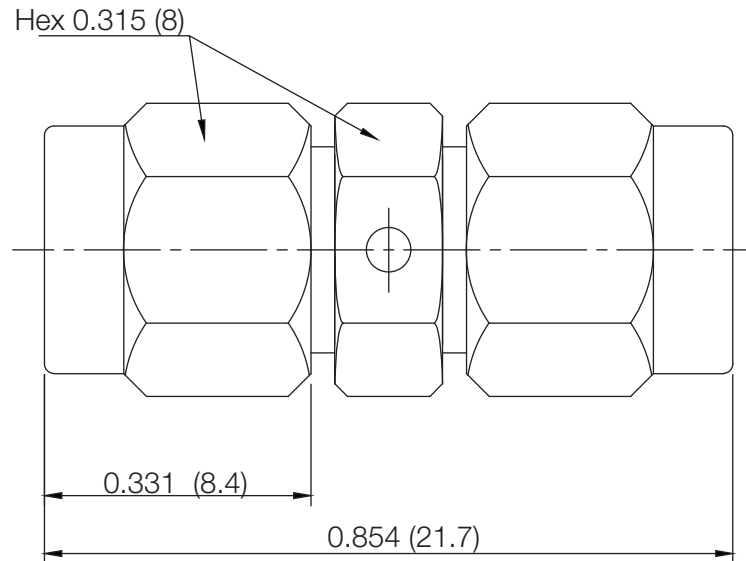
INITIAL

**Electrical Data**

Impedance	50 $\Omega$
Frequency Range	DC - 18 GHz
Insertion Loss	0.2dB Max
VSWR	1.20:1
Insulation Resistance	5,000 M $\Omega$ Min.
Contact Resistance	$\leq 3$ M $\Omega$
Power Handling	2 Watt . (Min)
Working Voltage	335 VRMS Max.
Dielectric Withstanding Voltage	1,000 V Min.
Operating Temp. Range	-45 $^{\circ}$ C ~ 85 $^{\circ}$ C
Durability	500 Cycles

**RoHS Compliant****Mechanical Data**

Temperature Range:	-45 $^{\circ}$ C - 85 $^{\circ}$ C
Durability	500 Cycles



Drawing not to scale. Dimensions for reference only

Units: Inches (mm)

**Konnect RF**

WWW.KONNECTRF.COM  
1-800-790-5887

PART NUMBER

**KAD178430**

DESCRIPTION

**Adapter, In Series, SMA Male Plug to Male Plug**

CAGE CODE

**664U0**

SIGNATURE

X

THIS DRAWING INCLUDING THE  
DESIGNS IS THE PROPERTY OF  
KONNECT RF AND IS NOT TO  
BE USED FOR ANY PURPOSE  
WITHOUT OUR APPROVAL.

**Component**

Body  
Center Contact  
Coupling Cap  
Insulator

**Material**

Brass  
Brass  
Brass  
PTFE

**Plating**

Gold  
Gold  
Gold