

PART NUMBER

KAD177631

REV.

INITIAL

Electrical Data

Impedance 50 Ω
 Frequency Range DC - 18 GHz
 VSWR 1.15 to 18 GHz
 Insertion Loss .05 $\sqrt{\text{Frequency}}$

RoHS Compliant**Materials**

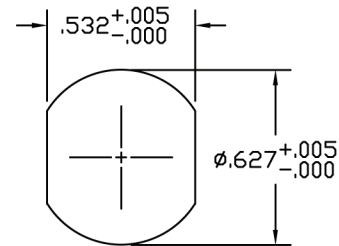
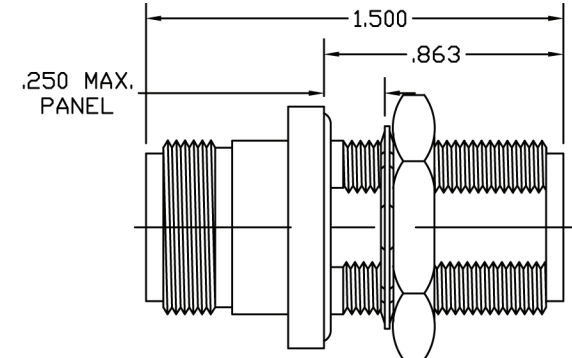
SST. Corrosion-Resistant, Non Magnetic 303, per ASTM
 A484 and A582. Beryllium Copper per ASTM-B-196, QQ-C-530
 PTFE Fluorocarbon per ASTM-D-1710

Finish

Center Conductors and solder components shall be plated per
 MIL-G-45204 Type II, Class 1 over Nickel plate per QQ-N-290
 Body and Body components shall be passivated per ASTM A380

VSWR and Frequency Range Specifications
 are for reference and are dependant on cable
 type and other application specific conditions

Drawing not to scale. Dimensions for reference only

RECOMMENDED
PANEL CUTOUT

WWW.KONNECTRF.COM
 540 NW University Blvd. Ste. 109
 Port Saint Lucie, Florida, 34986
 1-800-790-5887

PART NUMBER

KAD177631

DESCRIPTION

**Precision Adapter - In-Series - N Female
Jack to Female Jack - Bulkhead**

CAGE CODE

664U0

SIGNATURE

X

THIS DRAWING INCLUDING THE
 DESIGNS IS THE PROPERTY OF
 KONNECT RF AND IS NOT TO
 BE USED FOR ANY PURPOSE
 WITHOUT OUR APPROVAL.