

PART NUMBER

KAD177491

REV.

DATE

COMMENTS

INITIAL

Electrical Data

Impedance

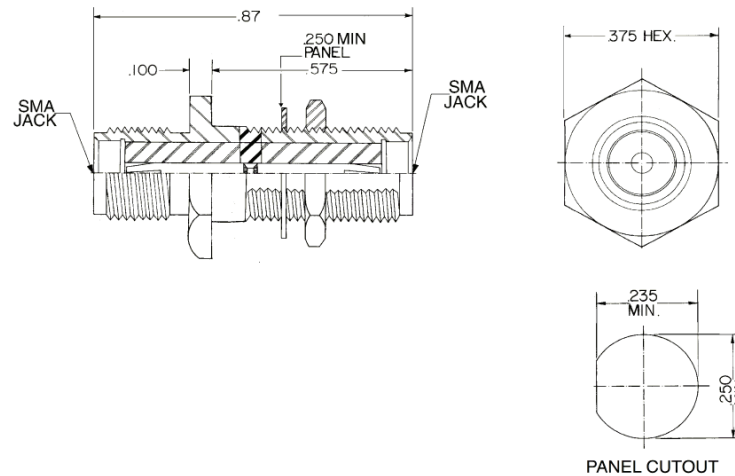
50 Ω

Frequency Range

DC - 26 GHz.

VSWR

1.25 @ DC- 26 GHz

RoHS Compliant

Drawing not to scale. Dimensions for reference only

Units: inches

Konnnect RF

WWW.KONNECTRF.COM

1-800-790-5887

PART NUMBER

KAD177491

DESCRIPTION

In-Series, SMA Female Jack to Female Jack, Bulkhead Mount

CAGE CODE

664U0

SIGNATURE

X

THIS DRAWING INCLUDING THE
DESIGNS IS THE PROPERTY OF
KONNECT RF AND IS NOT TO
BE USED FOR ANY PURPOSE
WITHOUT OUR APPROVAL.

Component

Body
Center Contact
Insulator

Material

Stainless Steel
BeCu
PTFE

Plating/Finish

Passivated
Gold