

PART NUMBER

**KAD177410**

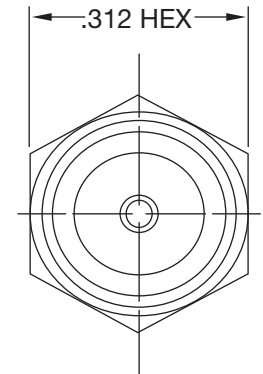
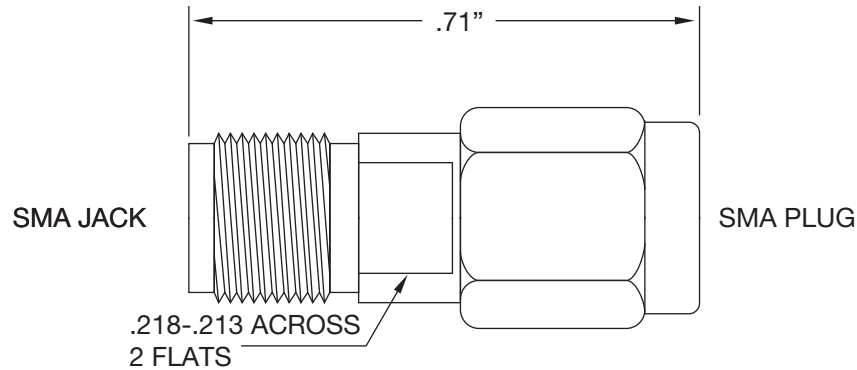
REV.

INITIAL

**Electrical Data****RoHS Compliant**

Impedance  
Frequency Range  
VSWR

50  $\Omega$   
DC-26 GHz  
1.25 Max. @ 26 GHz



VSWR and Frequency Range Specifications  
are for reference and are dependant on cable  
type and other application specific conditions

540 NW University Blvd. Ste. 109  
Port Saint Lucie, Florida, 34986  
1-800-790-5887

PART NUMBER

**KAD177410**

DESCRIPTION

**Adapter - In-Series - SMA Male Plug  
to Female Jack**

CAGE CODE

**664U0**

SIGNATURE

X

**Materials**

Body / Nut  
Center Contact  
Insulator

Stainless Steel  
Be-Cu  
PTFE

Gold over Nickel Plated  
Gold Plated

THIS DRAWING INCLUDING THE  
DESIGNS IS THE PROPERTY OF  
KONNECT RF AND IS NOT TO  
BE USED FOR ANY PURPOSE  
WITHOUT OUR APPROVAL.