

PART NUMBER

KAD177345

REV.

INITIAL

Electrical Data

Impedance **50 Ω**
 Frequency Range **DC - 34.5 GHz**
 VSWR **1.25 - 34.5 GHz**
 Insertion Loss **.05 $\sqrt{\text{Frequency}}$**

RoHS Compliant**Materials**

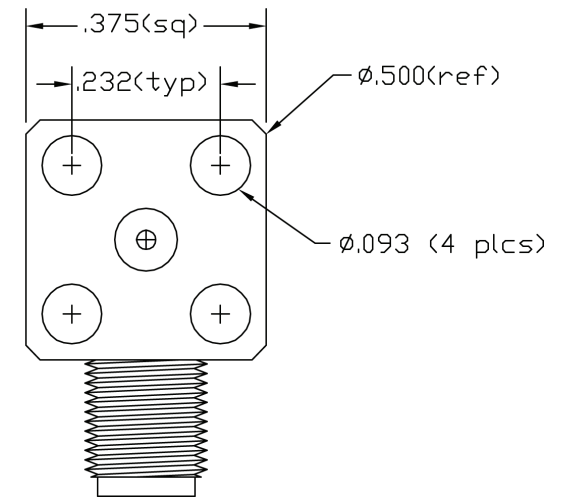
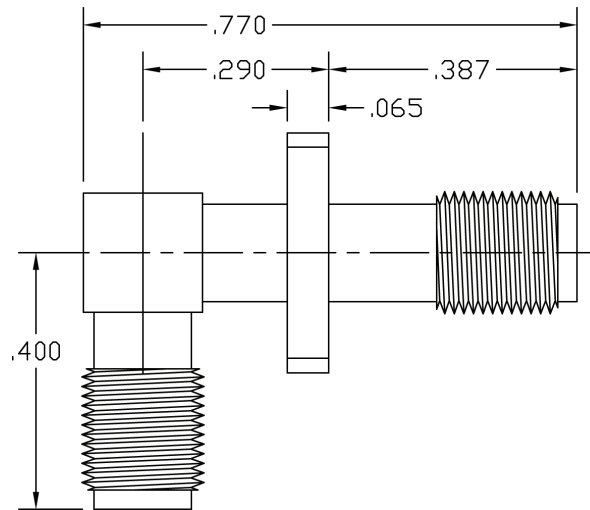
SST. Corrosion-resistant, Non Magnetic 303, per ASTM A484 and A582.
 Beryllium Copper per ASTM-B-196, QQ-C-530.
 PTFE Fluorocarbon per ASTM-D-1710 Type 1.

Finish

Center Conductors and solder components shall be plated per MIL-G-45204 Type II, Class 1 over Nickel plate per QQ-N-290.
 Body and Body components shall be passivated per ASTM A380

VSWR and Frequency Range Specifications are for reference and are dependant on cable type and other application specific conditions

Drawing not to scale. Dimensions for reference only

**Konnect RF**

WWW.KONNECTRF.COM
 540 NW University Blvd. Ste. 109
 Port Saint Lucie, Florida, 34986
 1-800-790-5887

PART NUMBER

KAD177345

DESCRIPTION

Precision Adapter - In-Series - SSMA Right Angle Female Jack to Female Jack - 4 Hole Flange Mount

CAGE CODE

664U0

SIGNATURE

X

THIS DRAWING INCLUDING THE DESIGNS IS THE PROPERTY OF KONNECT RF AND IS NOT TO BE USED FOR ANY PURPOSE WITHOUT OUR APPROVAL.