

PART NUMBER

KAD177326

REV.

A

08-22-13

Updated Seal Material
& Electrical Specs

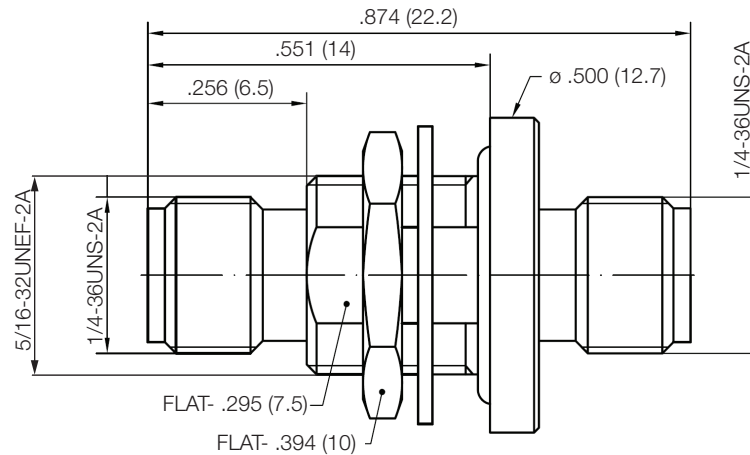
INITIAL

**Electrical Data**

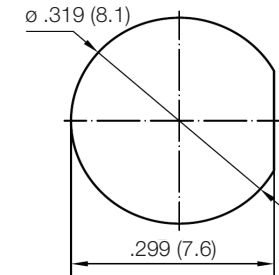
Impedance	50 Ω
Frequency Range	DC - 12.4 GHz
VSWR	1.3 Max. @ DC-6 GHz
Insertion Loss	0.25 dB Max. @ DC-6 GHz
Insulation Resistance	5,000 M Ω
Test Voltage	1,000 VRMS
Working Voltage	480 VRMS
Seal	30 PSI Max.

Mechanical Data

Temperature Range	-65°C to + 165°C
-------------------	------------------

RoHS Compliant

Recommended Mounting Hole



Drawing not to scale. Dimensions for reference only

Units: inches (mm)

Konnnect RF

WWW.KONNECTRF.COM
1-800-790-5887

PART NUMBER

KAD177326

DESCRIPTION

Adapter, In-Series, SMA Female Jack to Female Jack, Bulkhead, Glass Seal

CAGE CODE

664U0

SIGNATURE

X

THIS DRAWING INCLUDING THE
DESIGNS IS THE PROPERTY OF
KONNECT RF AND IS NOT TO
BE USED FOR ANY PURPOSE
WITHOUT OUR APPROVAL.

Component

Body, Nut
Washer
Center Contact
Insulator
Seal

Material

Stainless Steel
Brass
BeCu
PTFE
Glass

Plating

Passivated
Nickel
Gold