

PART NUMBER

KAD177276

REV.

INITIAL

Electrical Data

1. Impedance: 50 ohm
2. Frequency Range: DC to 18 GHz Max
3. Insertion Loss: 0.30 dB Max @ 6 GHz
4. VSWR \leq 1.07
5. Withstand Voltage: 1000V @ Sea Level
6. Working Voltage: 335V
7. Insulation Resistance: \geq 5000M Ω
8. Contact Resistance:

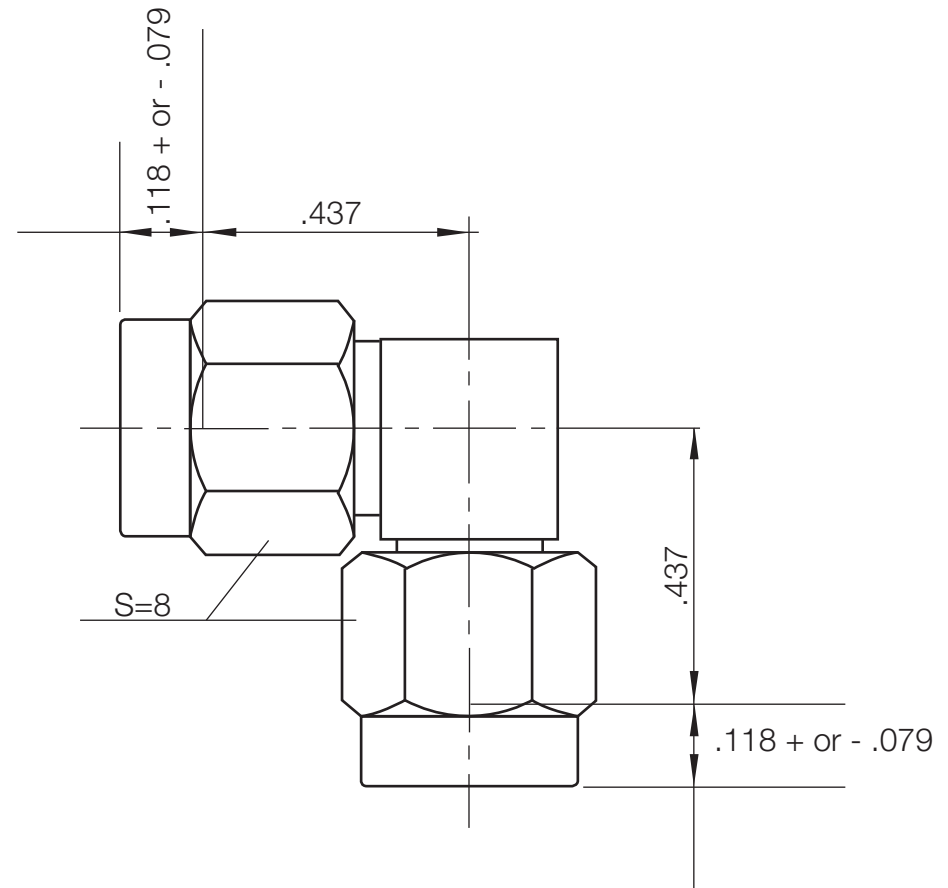
Center Contact \leq 3m Ω
Outer Contact \leq 2.5m Ω

Mechanical Data

1. Mating Cycles: \geq 500 Cycles

Environmental Data

1. Operating Temperature: -55 to +155 Deg. C

RoHS Compliant**Konnnect RF**

540 NW University Blvd. Ste. 109
Port Saint Lucie, Florida, 34986
1-800-790-5887

PART NUMBER

KAD177276

DESCRIPTION

**ADAPTER - IN SERIES
SMA RIGHT ANGLE MALE PLUG to MALE PLUG**

CAGE CODE

664U0

SIGNATURE

X

NOTES

THIS DRAWING INCLUDING THE
DESIGNS IS THE PROPERTY OF
KONNECT RF AND IS NOT TO
BE USED FOR ANY PURPOSE
WITHOUT OUR APPROVAL.

Description	Material	Plating
1. Center Contact	Beryllium Bronze	Gold Plated
2. Body	Stainless Steel	Gold Plated
3. Coupling Nut	Stainless Steel	Gold Plated
4. Retaining Ring	Beryllium Bronze	Gold Plated
5. Insulator	PTFE	
6. Gasket	Silicon Rubber	